A background map of California with various regions highlighted in different colors: purple, green, yellow, and pink. The map is semi-transparent, allowing the text to be clearly visible.

# Northwest Forest Plan & Northeast California Demographics 2000-2016

Cherilyn Neider

23 May 2019

Geography 093

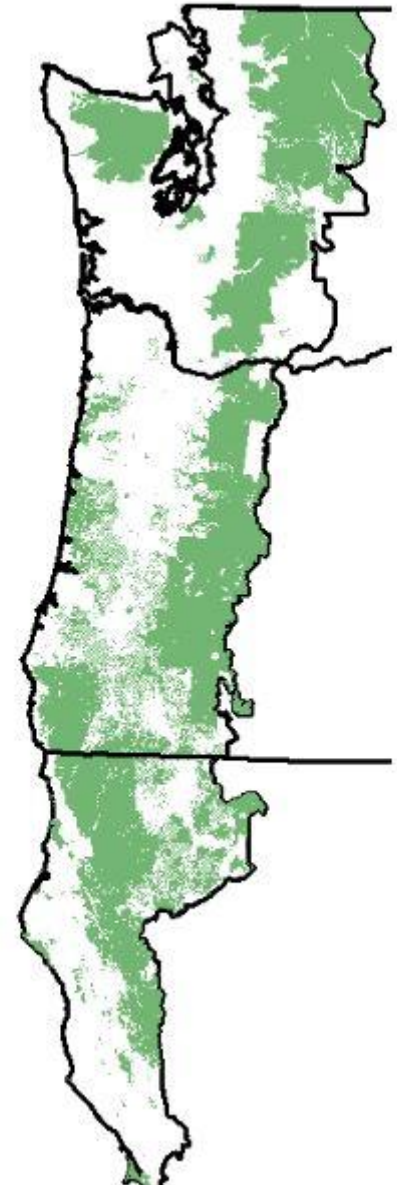
N. Jennings

# Project Objectives

- Northwest Forest Plan – 1994

What is happening in the area  
outside of the Northwest  
Forest Plan?

- Get as much out of this class  
as possible.
  - Census data, TIGER Files, FIPS ID, Double
  - Attribute Tables, Excel
  - Symbols, labeling, cartography
  - Tools: Tabulate Intersect, Clip, Buffer, Union,  
Layers of selected attributes, filter attributes
  - Charts and Graphs
  - ArcPro, Web Application, Web App



# Purpose

- **Federal Land**
  - **US Forest Service (USFS)**
  - **Bureau of Land Management (BLM)**
  - **National Parks**
- **Census Data (Existing Project)**
  - California & Oregon Counties outside of or adjacent to the Northwest Forest Plan
  - Data from 2000, 2010, 2016
- **Major Highways (Caltrans)**
- **Northwest Forest Plan (USFS)**
- **Timber Mills (USFS)**
- **Timber Harvest**
  - **Federal (USFS)**
  - **Private (Calfire)**

**Private Land vs.  
Federal Land –  
How much usable  
land?**

# Purpose

- Federal Land
  - US Forest Service (USFS)
  - Bureau of Land Management (BLM)
  - National Parks
- **Census Data (Existing Project)**
  - **California & Oregon Counties outside of or adjacent to the Northwest Forest Plan**
  - **Data from 2000, 2010, 2016**
- Major Highways (Caltrans)
- Northwest Forest Plan (USFS)
- Timber Mills (USFS)
- Timber Harvest
  - Federal (USFS)
  - Private (Calfire)

**Demographic  
Changes – Are  
there patterns in  
demographic  
changes?**

# Purpose

- Federal Land
  - US Forest Service (USFS)
  - Bureau of Land Management (BLM)
  - National Parks
- Census Data (Existing Project)
  - California & Oregon Counties outside of or adjacent to the Northwest Forest Plan
  - Data from 2000, 2010, 2016
- **Major Highways (Caltrans)**
- **Northwest Forest Plan (USFS)**
- **Timber Mills (USFS)**
- Timber Harvest
  - Federal (USFS)
  - Private (Calfire)

**Information that  
adds to analysis**

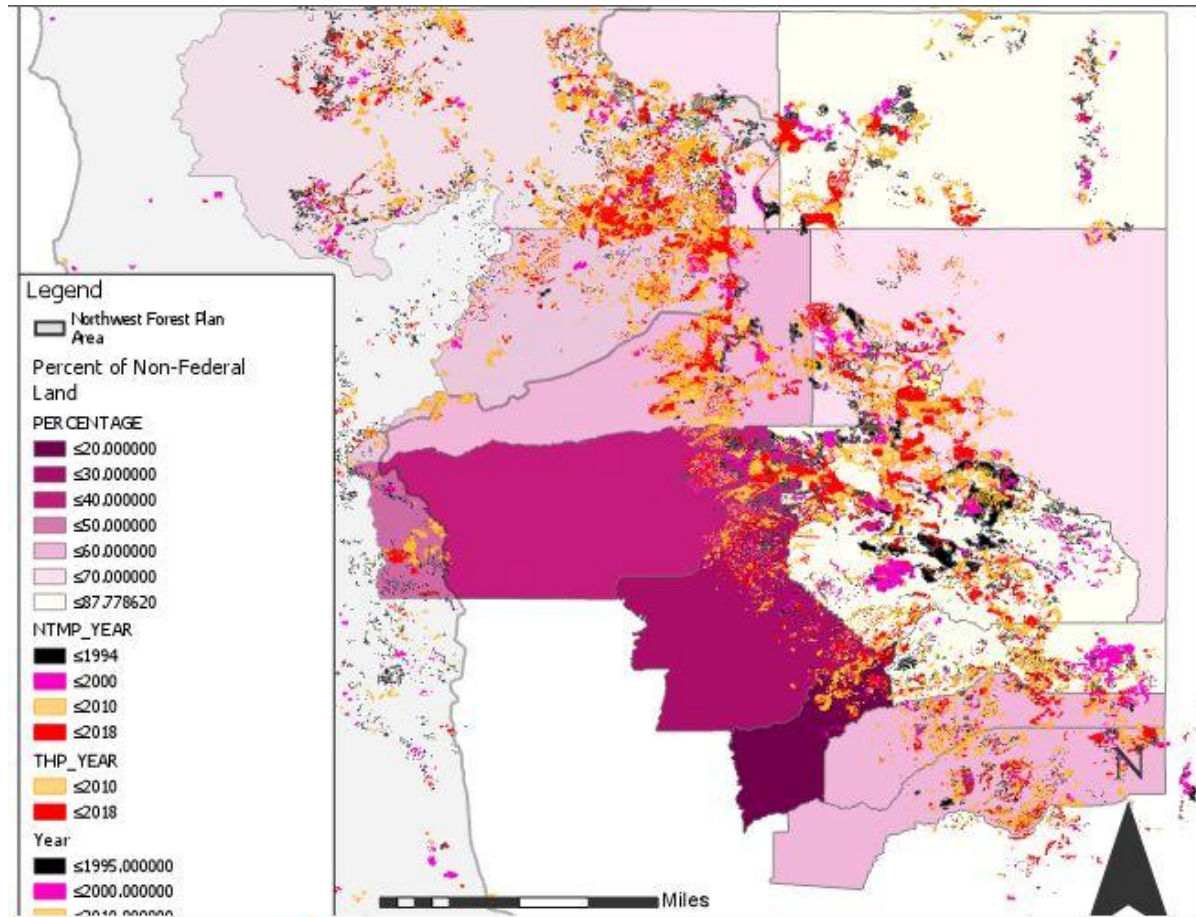
# Purpose

- Federal Land
  - US Forest Service (USFS)
  - Bureau of Land Management (BLM)
  - National Parks
- Census Data (Existing Project)
  - California & Oregon Counties outside of or adjacent to the Northwest Forest Plan
  - Data from 2000, 2010, 2016
- Major Highways (Caltrans)
- Northwest Forest Plan (USFS)
- Timber Mills (USFS)
- **Timber Harvest**
  - **Federal (USFS)**
  - **Private (Calfire)**

**Changes in Timber  
Harvest Since  
1994**



# Changes in Timber Harvest Since 1994



**Timber Harvest**  
Federal (USFS)  
Private (Calfire)

# Private Land vs. Federal Land

## – How much usable land?

The screenshot shows the 'Geoprocessing' window with the 'Tabulate Intersection' tool selected. The 'Parameters' tab is active. The tool is configured with the following settings:

- Input Zone Features:** CalifStudyArea\_Union
- Zone Fields:** COUNTYFP00
- Input Class Features:** CalifStudyArea\_Union
- Output Table:** CalifStudyArea\_Union\_Tabulat1
- Class Fields:** Department
- Sum Fields:** Square\_Miles

A 'Run' button is located at the bottom right of the tool interface. A green status bar at the bottom indicates: 'Tabulate Intersection completed. View Details Open History'.

**Federal Land**  
**US Forest Service (USFS)**  
**Bureau of Land Management (BLM)**  
**National Parks**

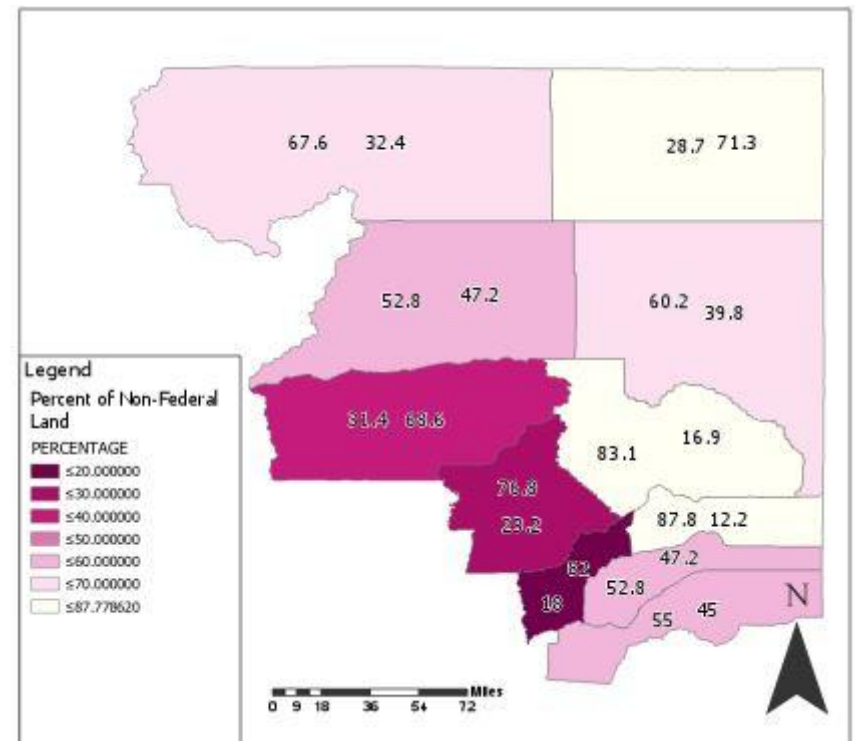
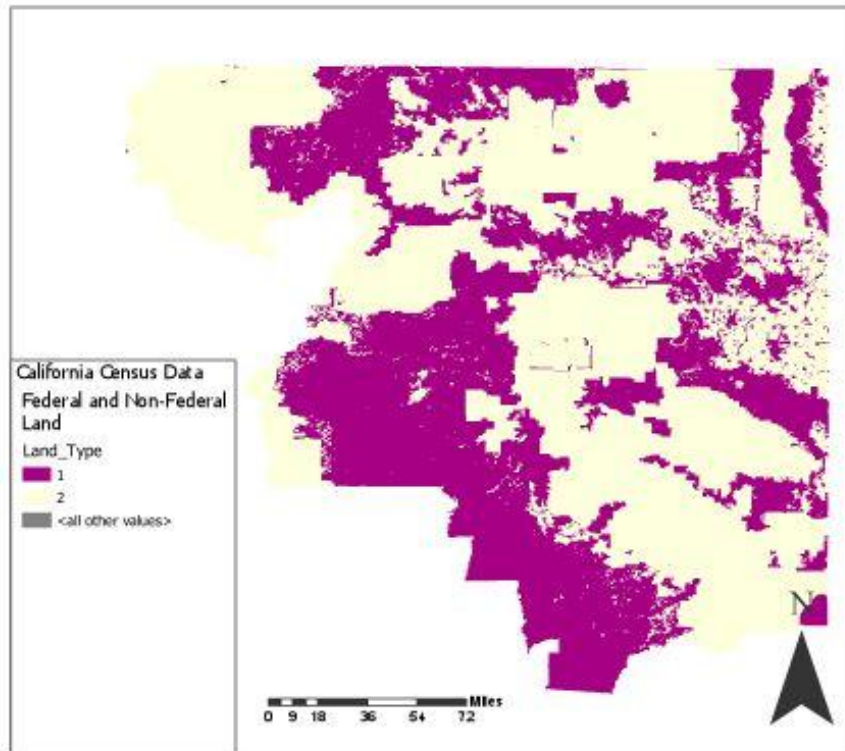
### Challenges:

- Only BLM, USFS, & National Parks. Did not use State, BoR, et
- Replicating what I did the first time!



# Private Land vs. Federal Land

## – How much usable land?



# Demographic Changes

## – Are there patterns in demographic changes?

DEC\_00\_SF3\_PCT050\_with\_ann-Poverty-AllAges

	A	B	C	D	E	F	G	H	I	J	K	L
1	GEO.id	GEO.id2	GEO.display	VD01								
2	Id	Id2	Geograph	Total:	2000 Total	2000 Perc	2000 Pove	2000 Perc	2000 Pove	2000 Perc	2000 Pove	2000 Perc
3	0500000US	6007	Butte Cou	197816	39148	20%	11547	29%	16579	42%	6969	18%
4	0500000US	6035	Lassen Co	24853	3484	14%	1204	35%	964	28%	836	24%
5	0500000US	6049	Modoc Co	9142	1962	21%	710	36%	429	22%	475	24%
6	0500000US	6057	Nevada Co	90922	7332	8%	2166	30%	1350	18%	2362	32%
7	0500000US	6061	Placer Cou	245680	14272	6%	4317	30%	3906	27%	3827	27%
8	0500000US	6063	Plumas Co	20571	2686	13%	801	30%	706	26%	733	27%
9	0500000US	6089	Shasta Co	159917	24556	15%	9082	37%	5712	23%	6303	26%
10	0500000US	6091	Sierra Cou	3515	397	11%	122	31%	79	20%	144	36%
11	0500000US	6093	Siskiyou C	43699	8109	19%	2825	35%	1752	22%	2282	28%
12	0500000US	6103	Tehama C	55088	9503	17%	3670	39%	2274	24%	2206	23%
13	0500000US	6115	Yuba Cour	58696	12205	21%	5038	41%	3014	25%	2828	23%
14												
15												
16												

DEC\_00\_SF3\_PCT050\_with\_ann-Pove

### Census Data (Existing Project)

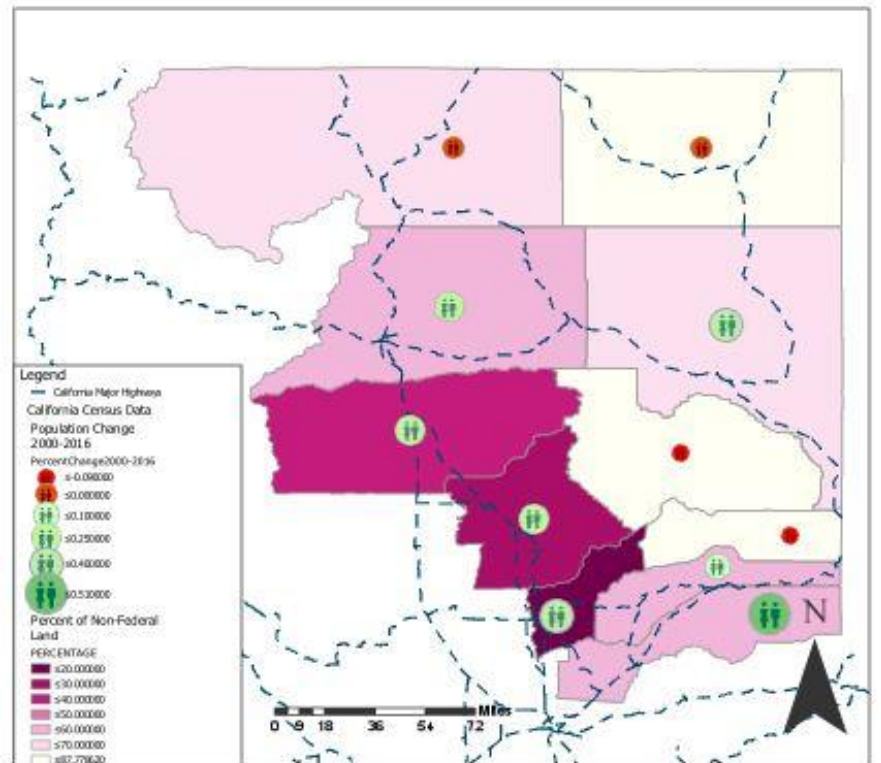
- California & Oregon Counties outside of or adjacent to the Northwest Forest Plan
- Data from 2000, 2010, 2016
- Language
- Poverty
- Population
- Age

D	H	I	J	K	L	M	N	O
	PercentC	PercentC	PercentC	2010	2010	2010	2010	2010
	hange200	PercentChan	hange200	Total	Total	Total	Total 18-	Total 35 -
NAMLSAD10	0-2010	ge2010-2016	0-2016	Male	Female	Under 18	34	64
Butte County, California	0.11	0.02	0.13	108175	110460	46667	58094	80799
Lassen County, California	0.41	-0.09	0.29	22863	12218	6386	10032	15431
Modoc County, California	0.05	-0.06	-0.01	4816	4789	2129	1523	4141
Nevada County, California	0.08	0.00	0.08	48741	49445	19683	15421	44839
Placer County, California	0.37	0.10	0.51	164341	172136	83548	63079	140085
Plumas County, California	-0.01	-0.08	-0.09	10451	9941	3810	2927	9730
Shasta County, California	0.11	0.01	0.12	86998	89908	40706	35022	72466
Sierra County, California	-0.04	-0.13	-0.17	1689	1677	582	342	1764
Siskiyou County, California	0.02	-0.02	0.00	22218	22472	9215	7356	19564
Tehama County, California	0.14	0.01	0.14	31198	31377	16239	12027	24540
Yuba County, California	0.21	0.04	0.26	35887	35273	20911	17867	25454

### Challenges:

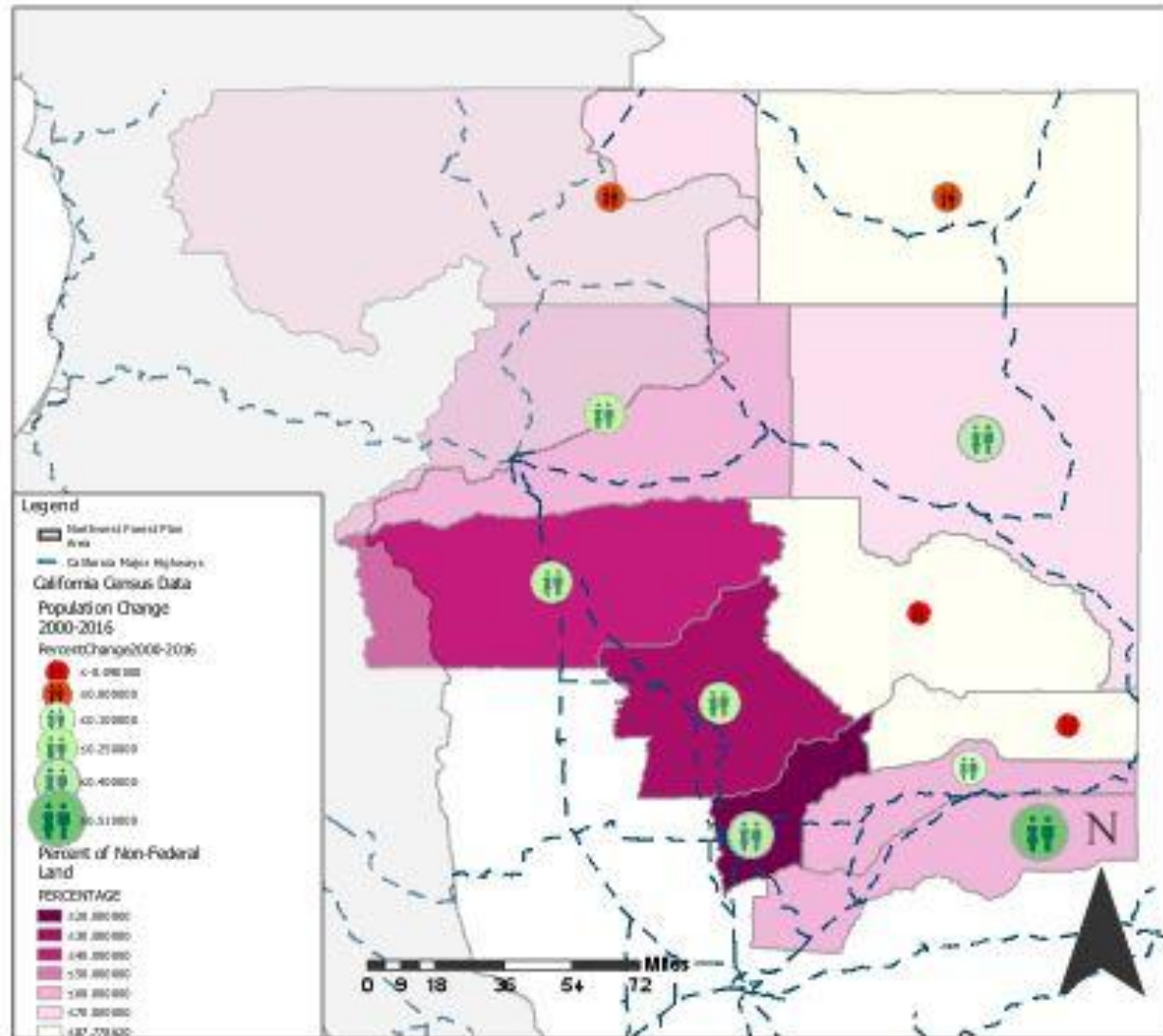
- Inconsistencies in data
- Deciding what data to use
- Determining how to represent data

## – Are there patterns in demographic changes?



# Demographic Changes

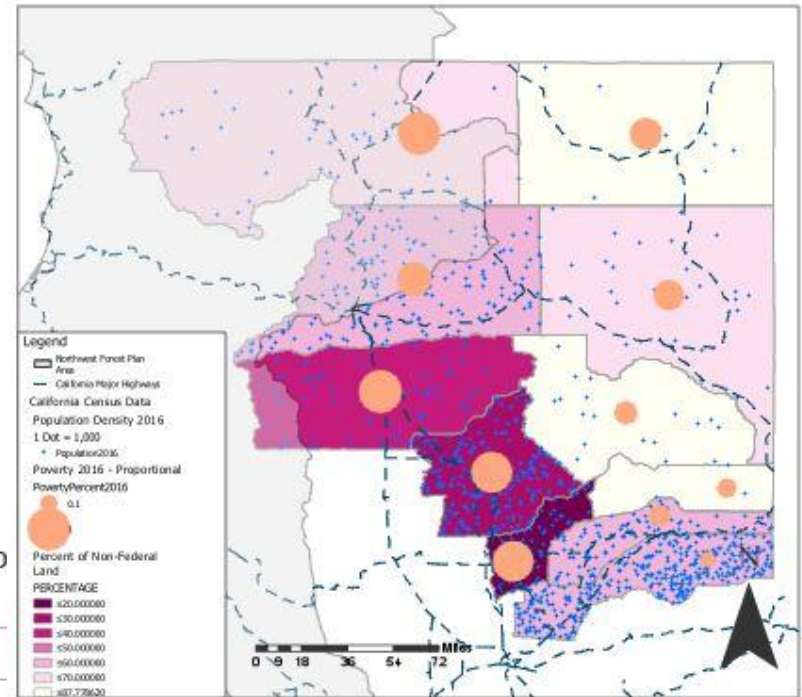
– Are there patterns in demographic changes?



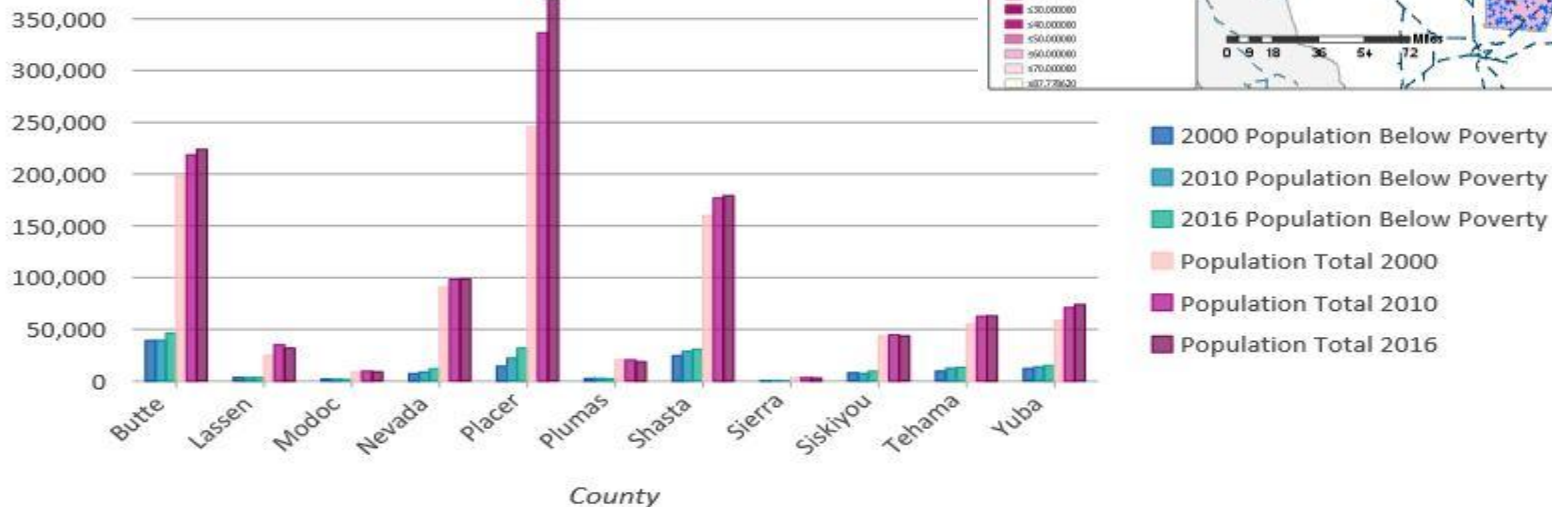


# Demographic Changes

– Are there patterns in demographic changes?



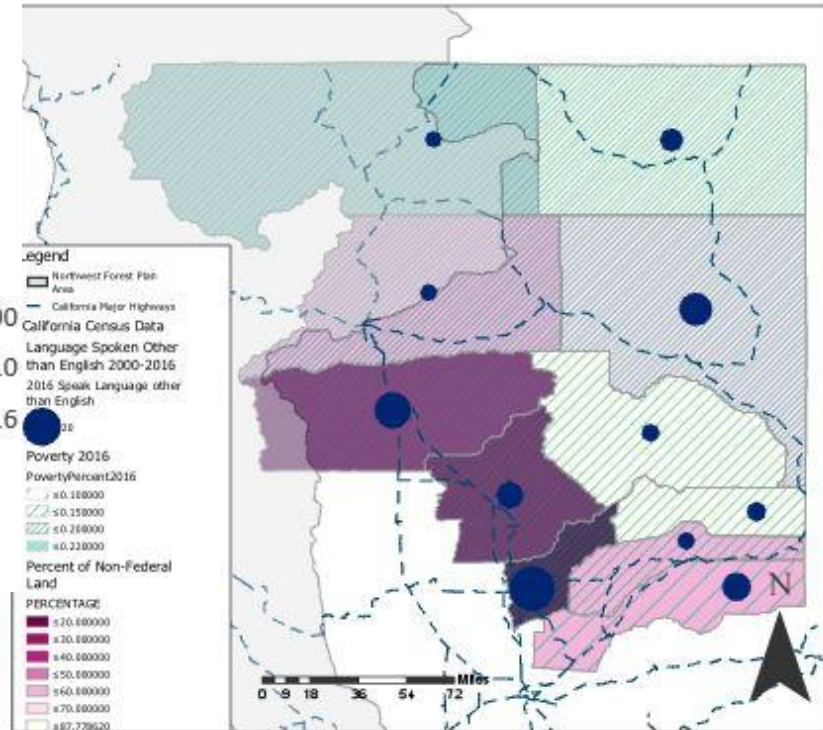
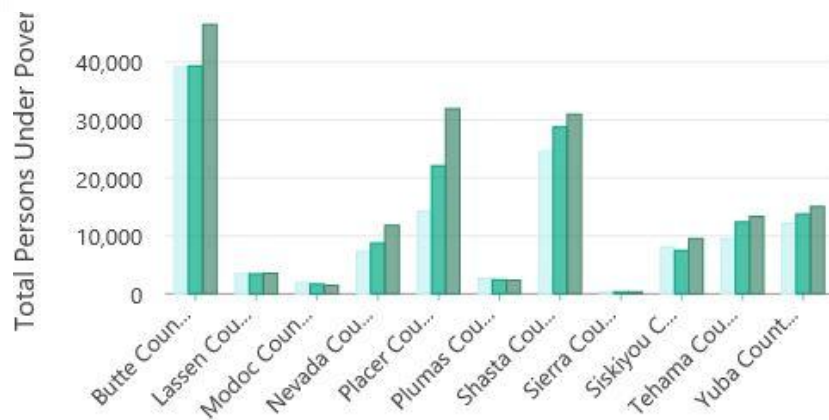
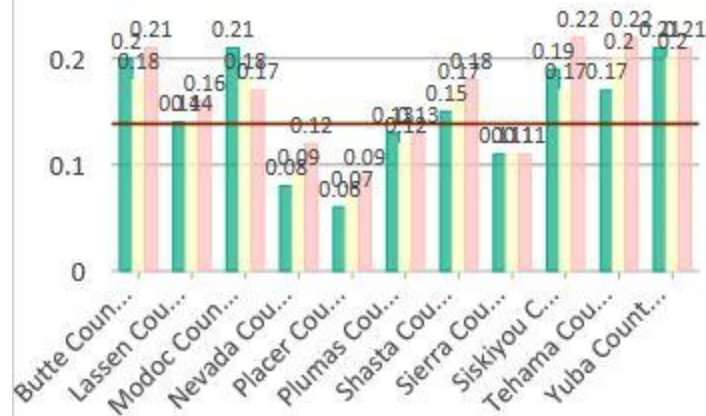
2000 - 2016 Total and Poverty Pop



# Demographic Changes

## – Are there patterns in demographic changes?

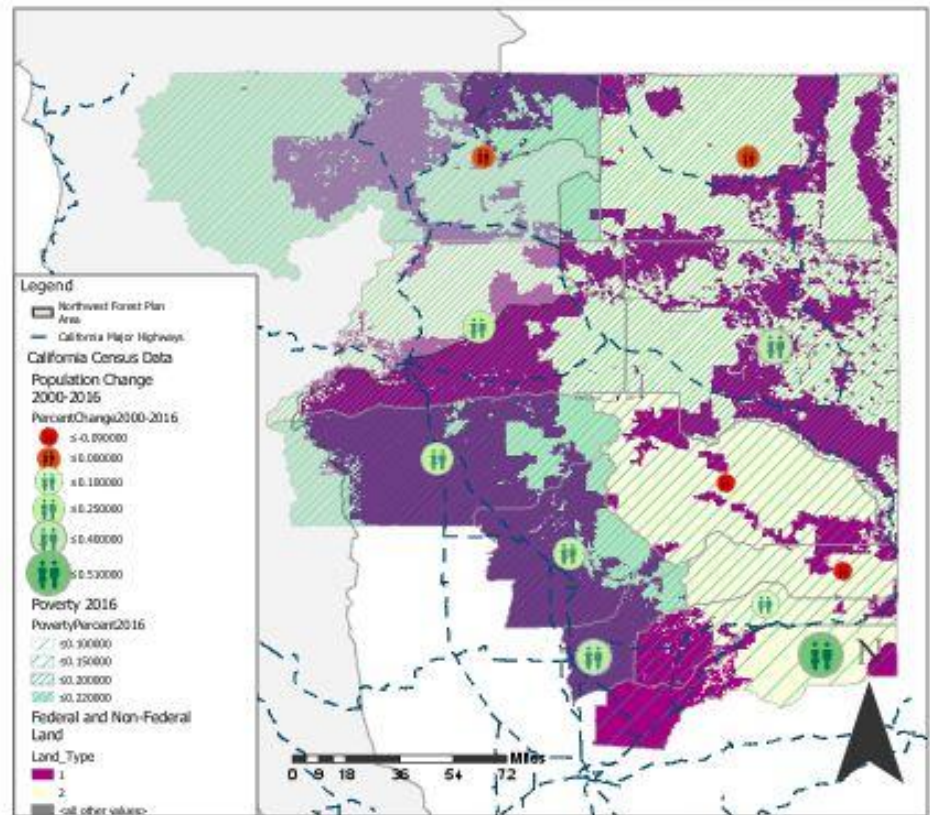
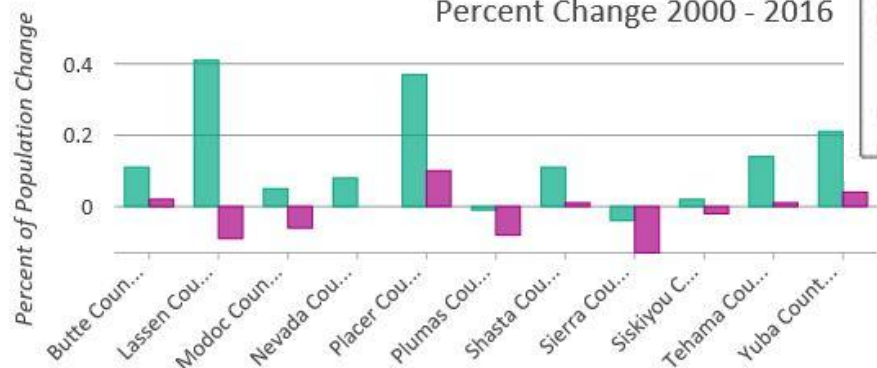
2000 - 2016 Percent of Population Below Poverty Level



- 2000 Income Below Poverty Level:
- 2010 Income Below Poverty Level:
- 2016 Income Below Poverty Level:

# Demographic Changes

– Are there patterns in demographic changes?

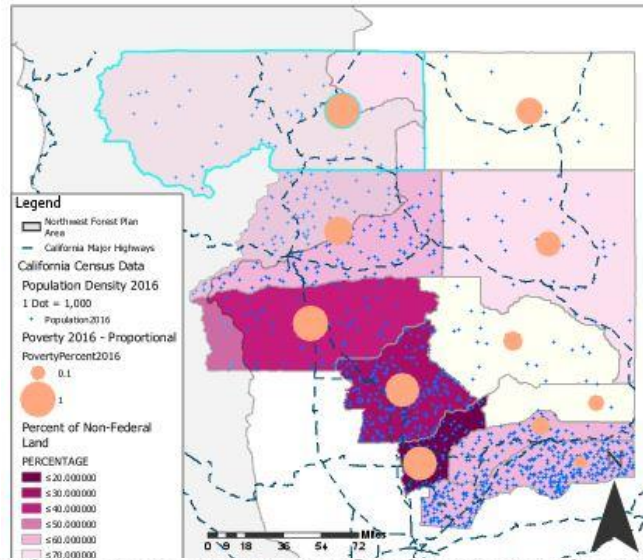


PercentChange2000-2010  
PercentChange2010-2016

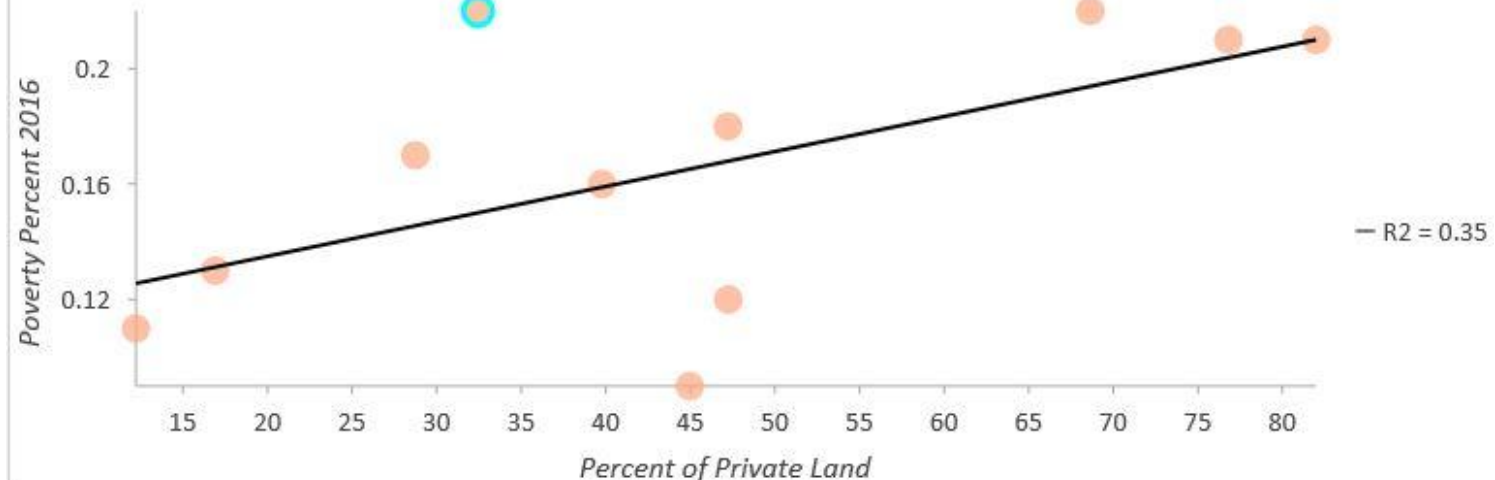


# Demographic Changes

– Are there patterns in demographic changes?



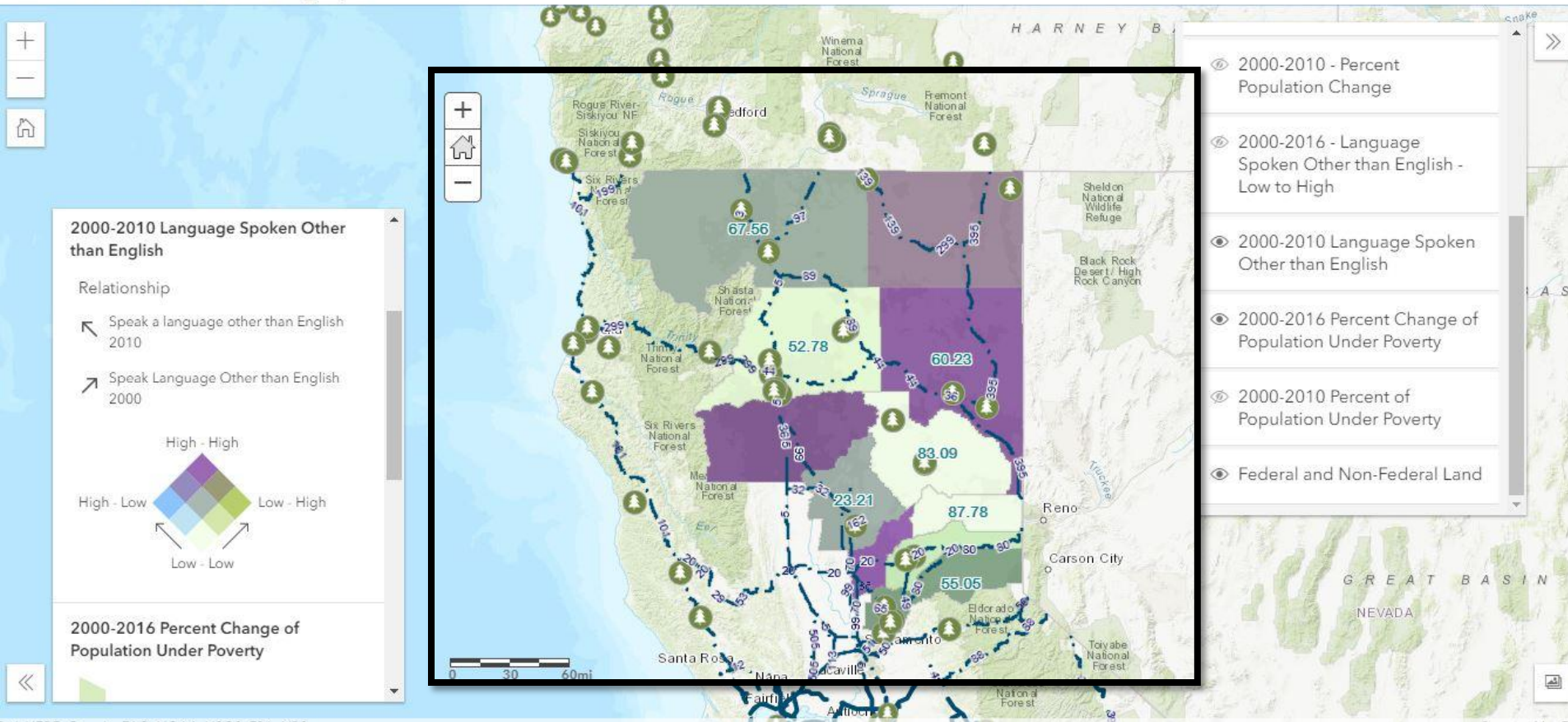
Relationship between Percent of Private Land and Poverty 2016



# Demographic Changes

## – Are there patterns in demographic changes?

Northeast California Demographics



### Interactive Legend

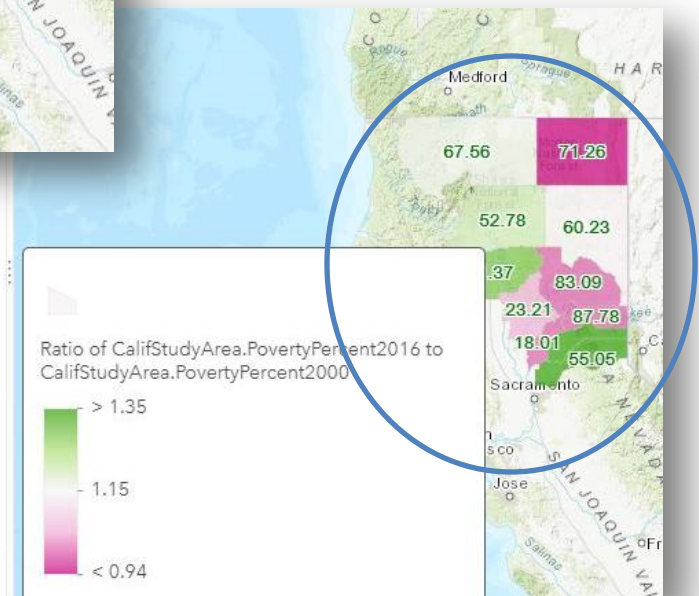
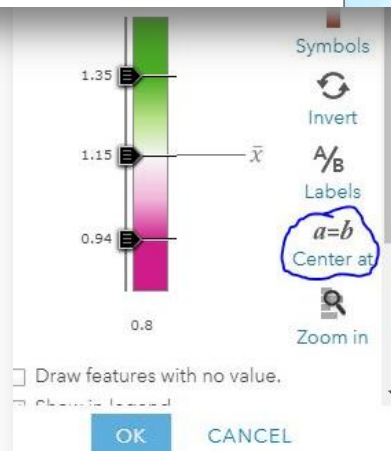
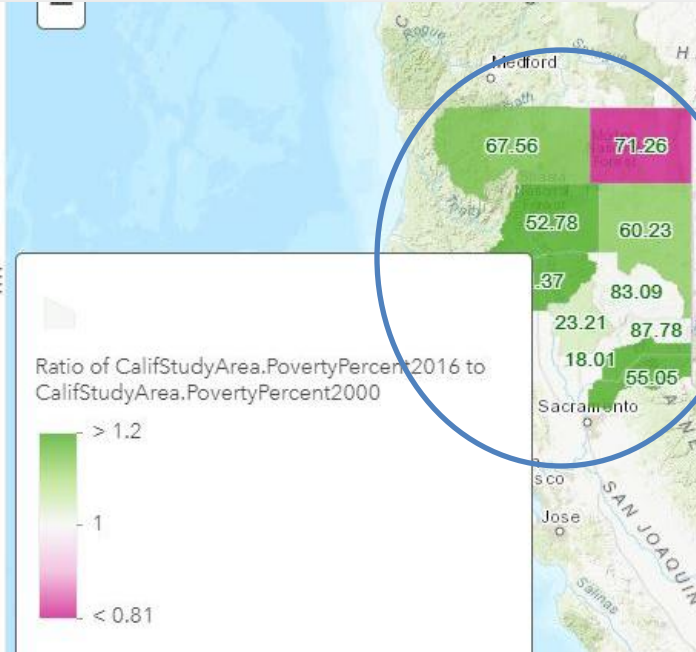
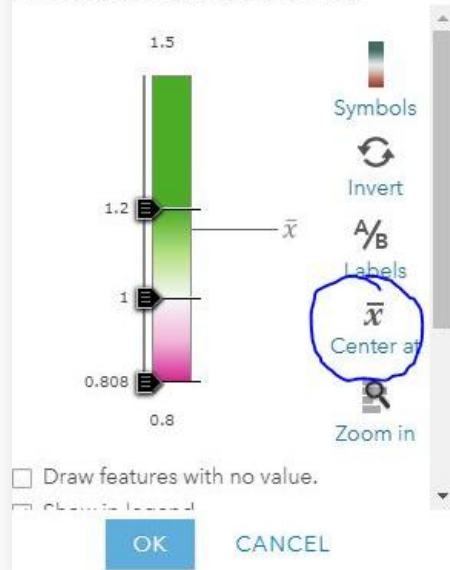
Documentation on how to modify the legend drawing style can be found here: <https://doc.arcgis.com/en/arcgis-online/create-maps/change-style.htm>. The interactive legend tool does not support field attributes added to the map legend via custom expression.

[Web App](#)

# Demographic Changes

– Are there patterns in demographic changes?

Showing the ratio of  
CalifStudyArea.PovertyPercent2016 to  
CalifStudyArea.PovertyPercent2000

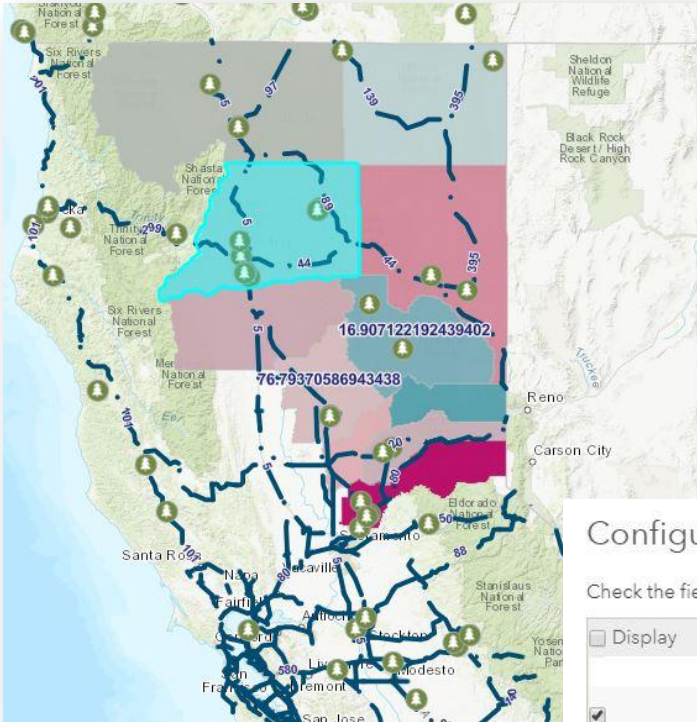


[Web App](#)



# Demographic Changes

## – Are there patterns in demographic changes?



089

CalifStudyArea.PovertyPercent2016	0.18
CalifStudyArea.PovertyPercent2010	0.17
CalifStudyArea.PovertyPercent2000	0.15
County	Shasta
Square_Miles	2,028.76
Percent of Federal Land	52.78
Population 2000	159,917
Population 2010	166,624
Population 2016	168,762

### Configure Attributes

Check the fields you want to display. Select a field to change its alias, order it, and format it.

<input type="checkbox"/> Display	Field Name	Field Alias
<input type="checkbox"/>	on_Tabulat2_L	
<input checked="" type="checkbox"/>	{CalifStudyArea_Uni on_Tabulat2_S}	Square_Miles
<input type="checkbox"/>	{CalifStudyArea_Uni on_Tabulat2_A}	AREA
<input checked="" type="checkbox"/>	{CalifStudyArea_Uni on_Tabulat2_P}	Percent of Federal Land
<input type="checkbox"/>	{CalifLanguage2000 _2016_csv_Id}	Id

Format  
2 decimal places

☐ Use 1000 Separator

OK CANCEL