

# Emergency Egress Maps of the American River

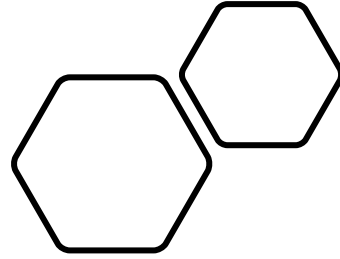
---

Kristin Kettenhofen

GEOG 93

May 2020





- My maps started out on Google Earth
- Egress trail information found in outdated river pamphlets



▼ Search

Search

ex: Tokyo, Japan

[Get Directions](#) [History](#)

▼ Places

▼ My Places

▼ Sightseeing Tour

Make sure 3D Buildings layer is checked

✓

Marshall State Discovery Park

✓

Chili Bar Put In

✓

South Fork American River

✓

Skunk Hollow Take Out

✓

Greenwood Take out/Put In

✓

Greenwood Trail Coloma

✓

Henningsen Lotus Park

✓

Old Flume Trail

✓

Kelsey Creek Trail

✓

Above Trouble Maker Trail

✓

ARR Access

✓

Cronin Trail

✓

Down Stream Cronin

✓

Satan's RR Top Trail

✓

Satan's RL Trail

✓

Satan's RR Trail Bottom

✓

Oxbow Reservoir

✓

Oxbow Access

✓

Middle Fork American River

✓

Greenwood (Ruck-A-Chucky) Access

✓

Greenwood Trail

✓

Tunnel Chute Trail

✓

Volcanville Trail

✓

Mile 10 Trail

▼ Layers

▼ Primary Database

✓

Announcements

✓

Borders and Labels

✓

Places

✓

Photos

✓

Roads

✓

3D Buildings

✓

Ocean

✓

Weather

✓

Gallery

✓

Global Awareness


✓

More

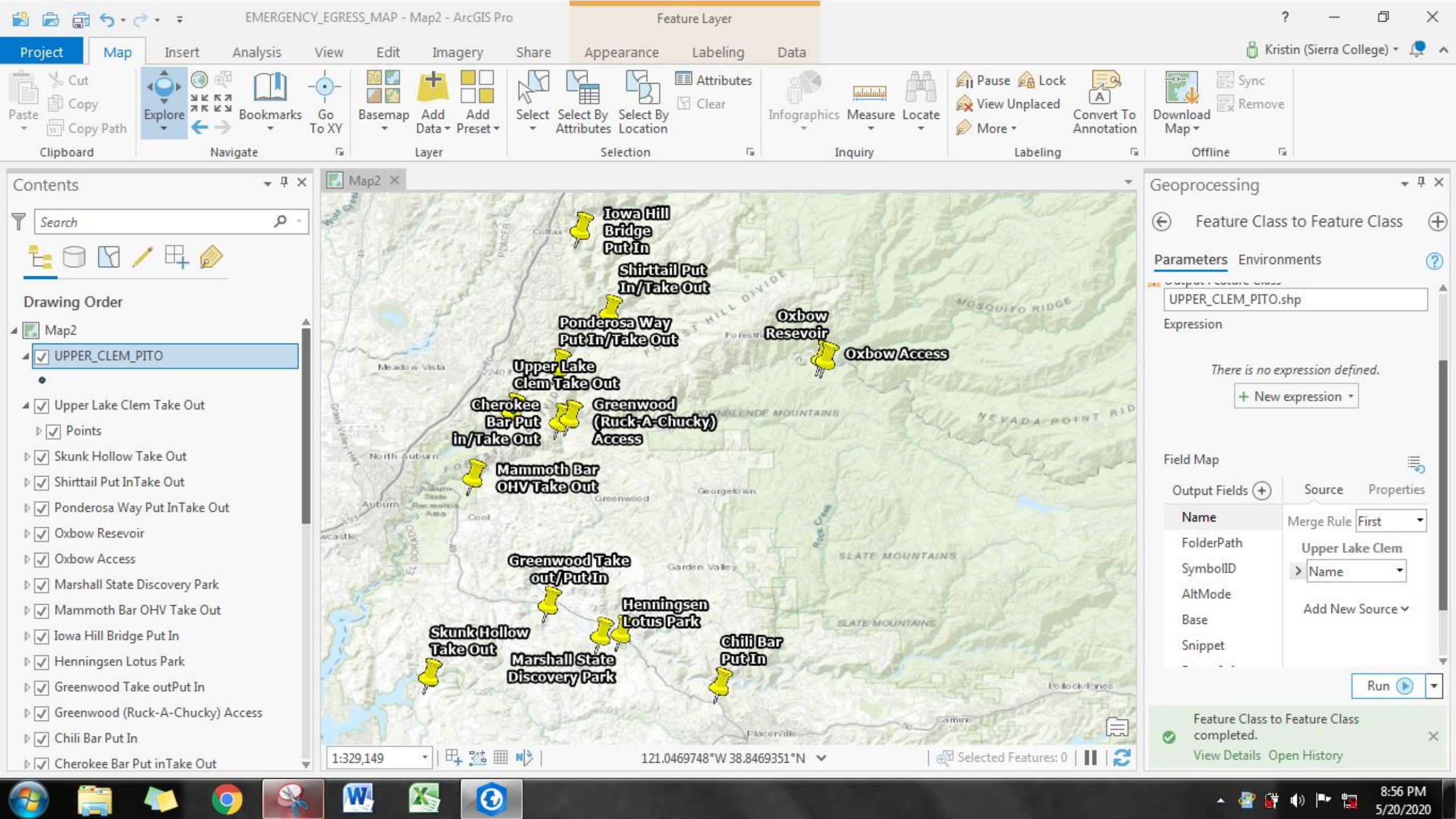
✓

Terrain



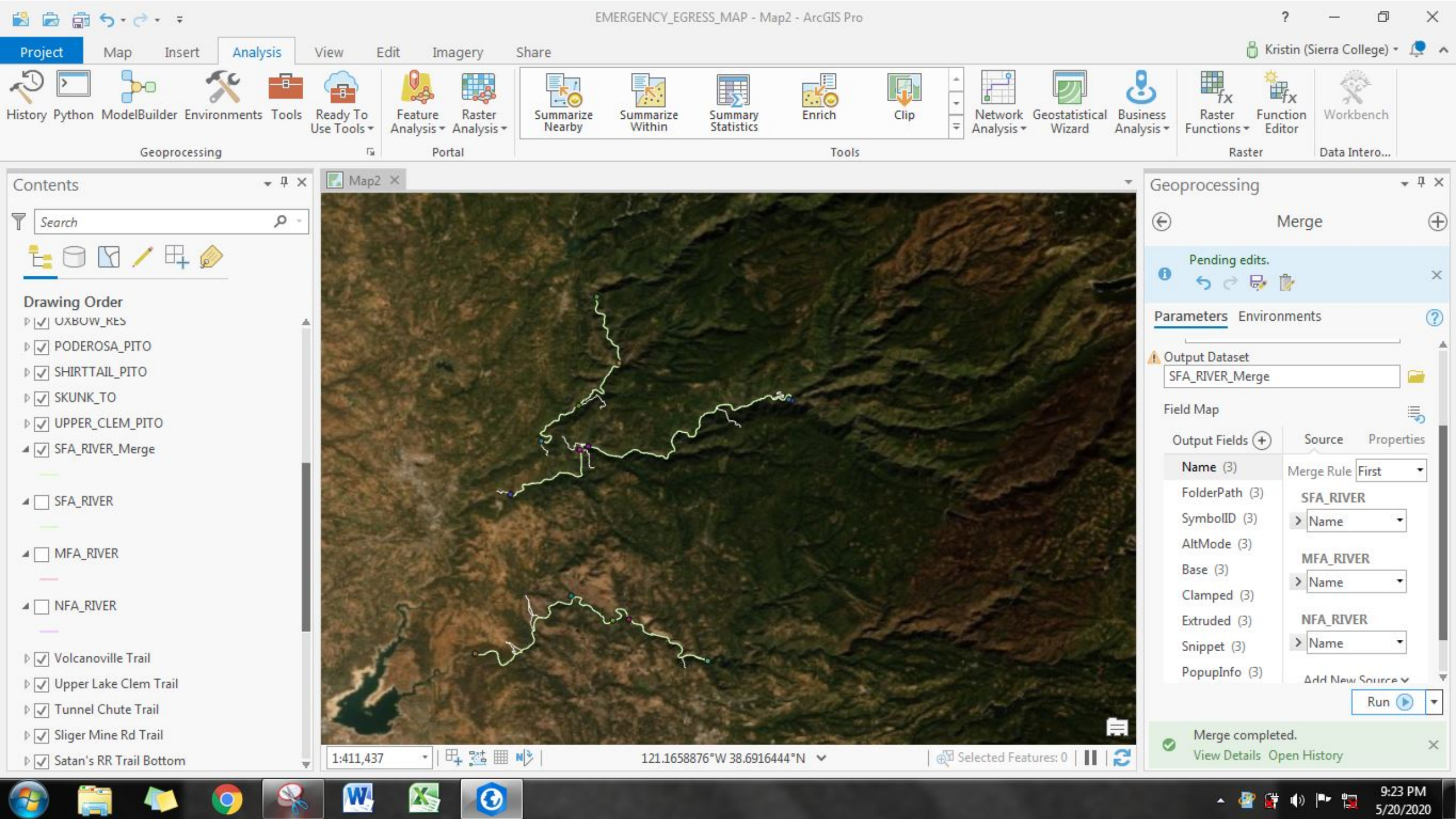
- 
- KMZ files were converted to layers
  - Layers were then exported to usable shape files





- Now that I have usable shapefiles, I merged together data that I wanted in the same layer.
- Forks of the American River, Trails, River Access points,






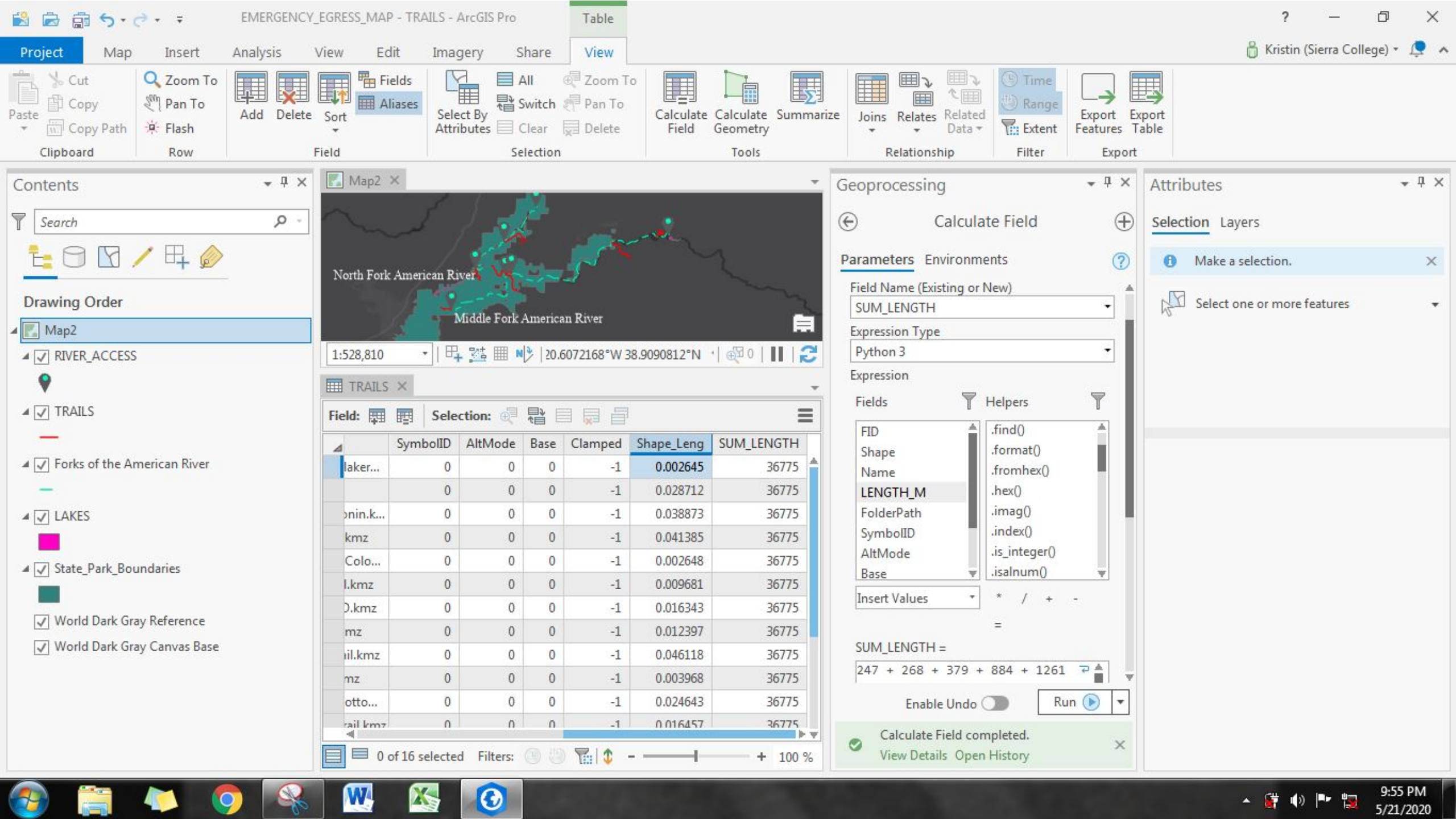
## Drawing Order

- ▶ ☒ UXBOW\_KEY
- ▶ ☒ PODEROSA\_PITO
- ▶ ☒ SHIRTTAIL\_PITO
- ▶ ☒ SKUNK\_TO
- ▶ ☒ UPPER\_CLEM\_PITO
- ▶ ☒ SFA\_RIVER\_Merge
- ▶ ☐ SFA\_RIVER
- ▶ ☐ MFA\_RIVER
- ▶ ☐ NFA\_RIVER
- ▶ ☒ Volcanoville Trail
- ▶ ☒ Upper Lake Clem Trail
- ▶ ☒ Tunnel Chute Trail
- ▶ ☒ Sliger Mine Rd Trail
- ▶ ☒ Satan's RR Trail Bottom

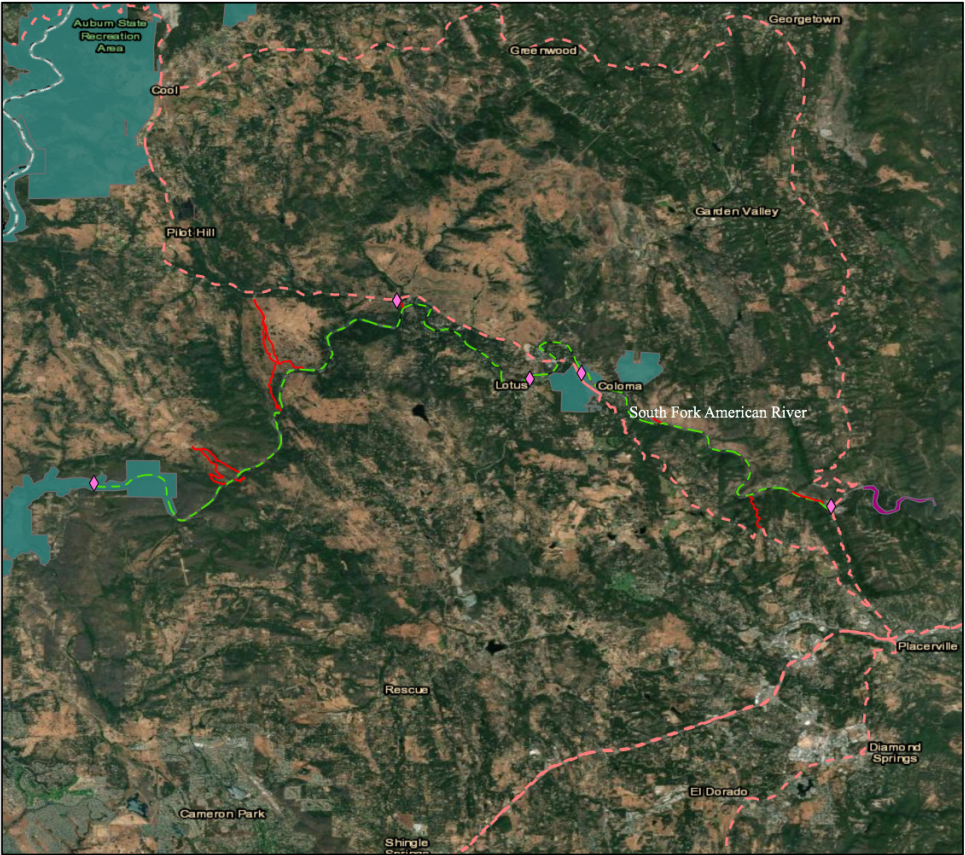


- 
- I wanted to analyze the length of all the trails I mapped so I ran a geoprocess and calculated the length.



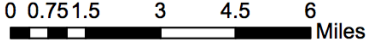


South Fork American River Emergency Egress Map  
Kristin Kettenhofen May 2020



Legend

- River Access
- Trails
- Forks of the American River
- Lakes
- State Park Boundary
- County Boundaries
- Major Roads**
  - Hwy
  - Hwy
  - Hwy
  - County Hwy

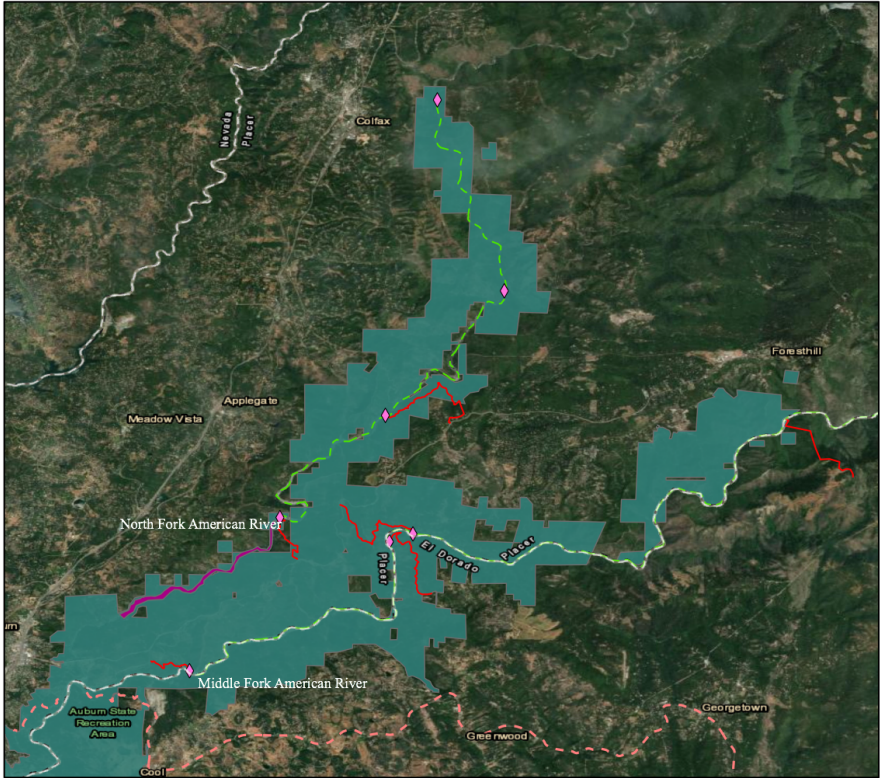


Credits:  
Department of Boating and Waterways  
California State Parks  
U.S. Bureau of Land Management





North and Middle Fork American River Emergency Egress Map  
Kristin Kettenhofen May 2020



**Legend**

- River Access
- Trails
- Forks of the American River
- Lakes
- State Park Boundary

County Boundaries

**Major Roads**

- Hwy
- Hwy
- Hwy
- County Hwy

0 0.75 1.5 3 4.5 6 Miles

Credits:  
Department of Boating and Waterways  
California State Parks  
U.S. Bureau of Land Management

