

Kevin Starr
Professor Jennings
Geography 90
Final Paper
12-6-18

Project Summary:

Webber Lake Campground, which is located just north of Truckee, is owned and operated by the Truckee Donner Land Trust. The project map consists of some of the water (supply and waste) infrastructure at the campground and for the cabins that are also on the property.

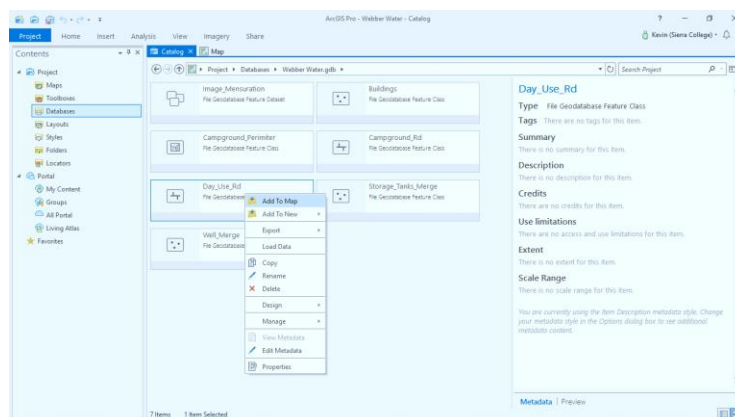
Purpose:

The intent is to have the information in the attribute tables and the associated map be a living document that will change as improvements are made to the system.

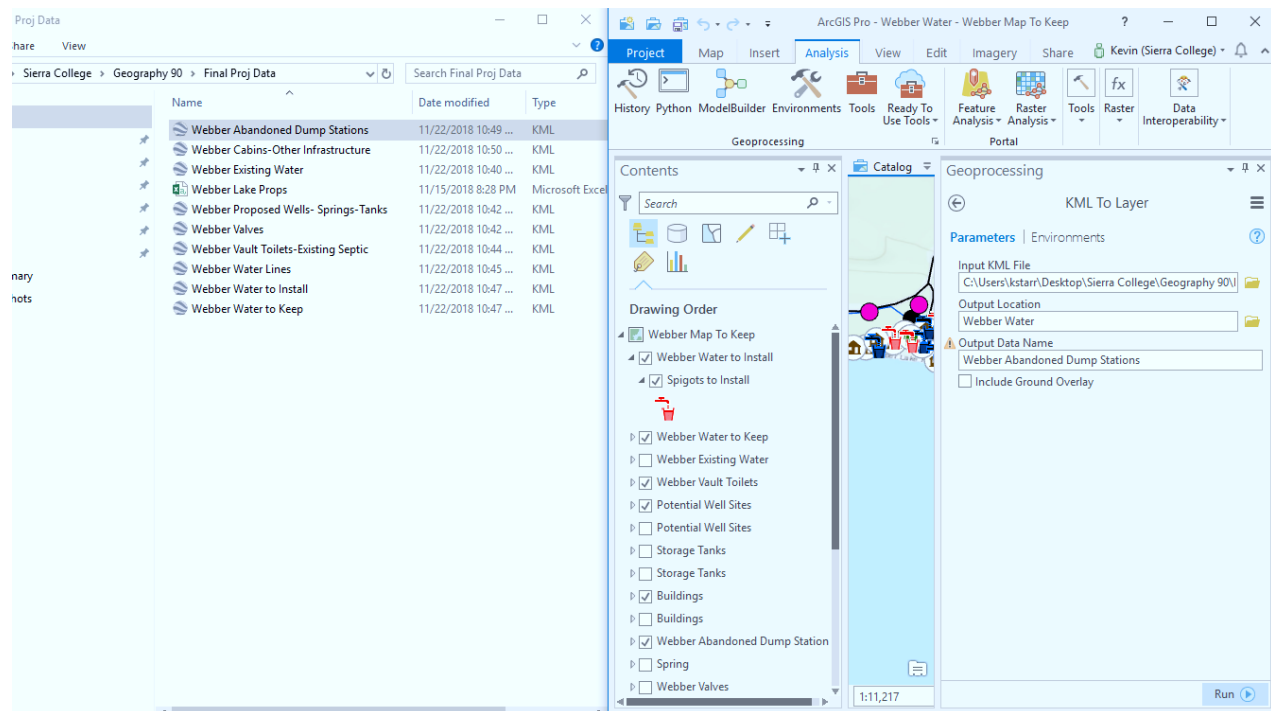
Process Description:

The process started with identifying water system related features to be catalogued before even stepping outside. The existing water system is made up from a mix of parts dating back almost seventy five years. Given the age of the system I also wanted to identify the parts that could stay and the components that should be replaced or upgraded. That process wouldn't have been possible without the help of the caretakers who have more than twenty years of working knowledge of the property.

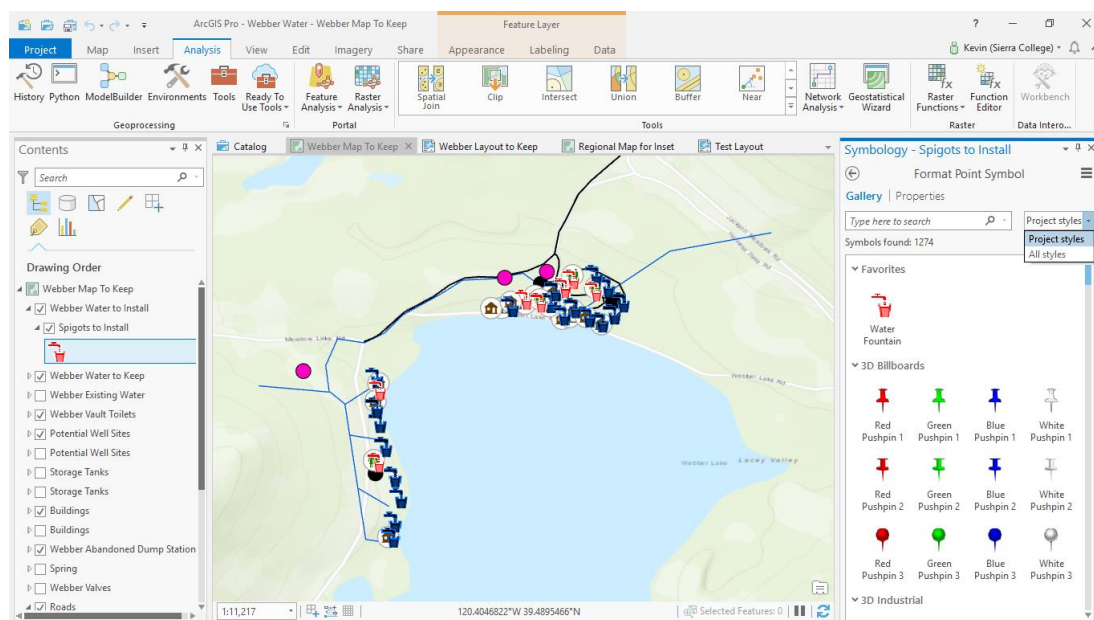
After establishing the baseline of information I wanted to record, I set out to physically walk the property while taking data points on an iPhone with an external receiver. This was a bit tedious given the size of the property and the physical amount of infrastructure that is existing. Once the data was gathered, it was time to take it back to the office and start organizing it into something that would eventual become a working map. That started with creating a new file geodatabase where all the files would be stored. The next step was to start creating feature classes of the data I had imported as well as the data I had to create manually.



Since most of my data was in .kml or .gpx file formats, one of the first geoprocessing steps was to convert those into feature layers for the main geodatabase.



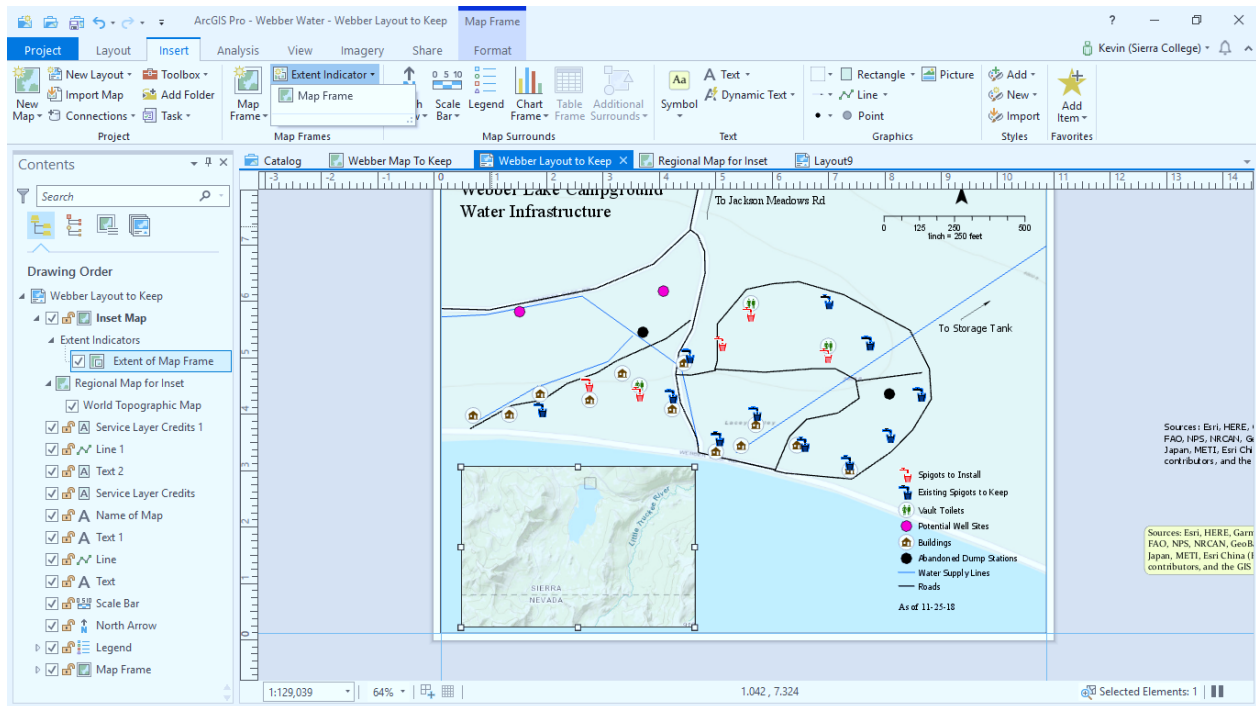
Once all of the data was put into ArcPro, it was time to create a layout map and start to refine how the final product would actually look. I customized the symbology to better reflect the features on the map by toggling on “All styles” in a pull down tab in the symbology pane.



I also quickly realized that many of the features classes I created or imported had to be consolidated (merged) into singular feature classes in order to streamline items in my legend.

After all of the data was refined, it was time to put the elements of a basic map into place- north arrow, scale bar, etc.

I experimented with putting an inset map into the layout with an extent indicator to give more regional context.



Last minute adjustments were made, like changing the naming convention in the table of contents so that the legend is more intuitive. Export the project to PDF and that completed the map.

Challenges:

There were many. The first was going back and forth from ArcMap to ArcPro the last several months and I finally had to commit to ArcPro. Next up was trying to show too much data that I wanted to display on my map which made the features indistinguishable from each other. I just simply had to narrow the geographic scope of my extent, as well as pare down some of the features that I wanted to display. I also had trouble with making an extent indicator in the inset map and instead of a box or rectangle, I used a star to show geographic reference. Lastly, I wasn't able to export my project as a map package even after trying to rectify the error code. This is still unresolved.

Lessons Learned:

I became more familiar working with ArcPro along with the hard lesson of needing to save your project often.

Final Map:

