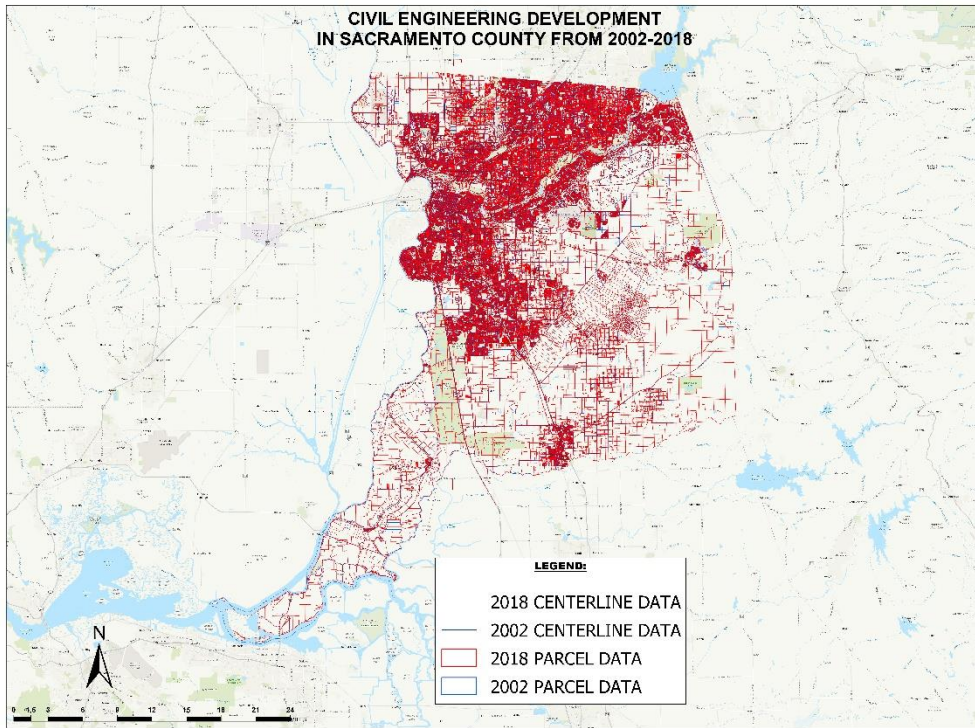


Development of Roadways and Parcels in Sacramento County 2002-2018



The dedicated Civil Engineers and Surveyors of the Sacramento area have been able to increase the efficiency of the city by allocating and adding new parcels. Roadways have also been an important part of the expansion in the area. These changes are shown in the map that I have created through overlaying and analysing parcel and centreline data for the entirety of Sacramento County. The year of 2002 shown in blue, and 2018 shown in red, overlap to create existing data and the solid red show the true scope of development in the area.