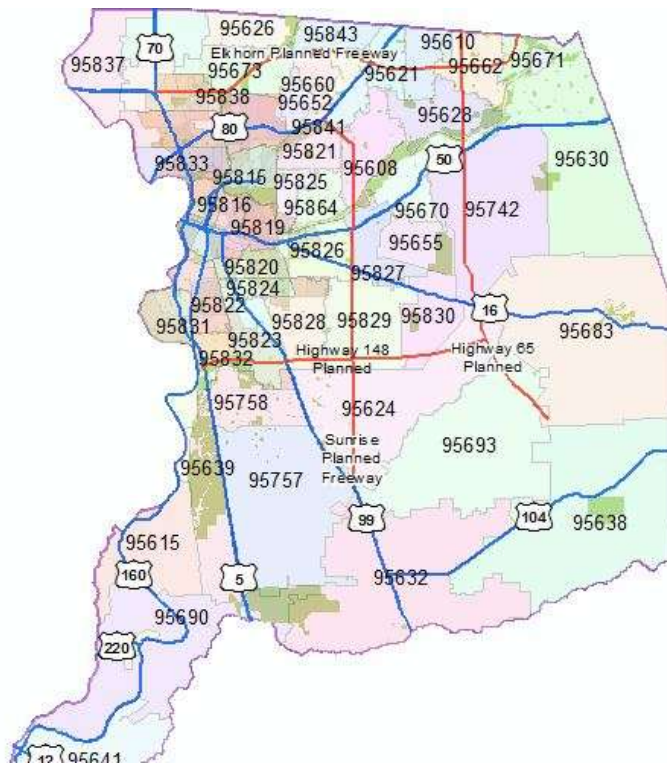


Freeway Construction Impact Analysis

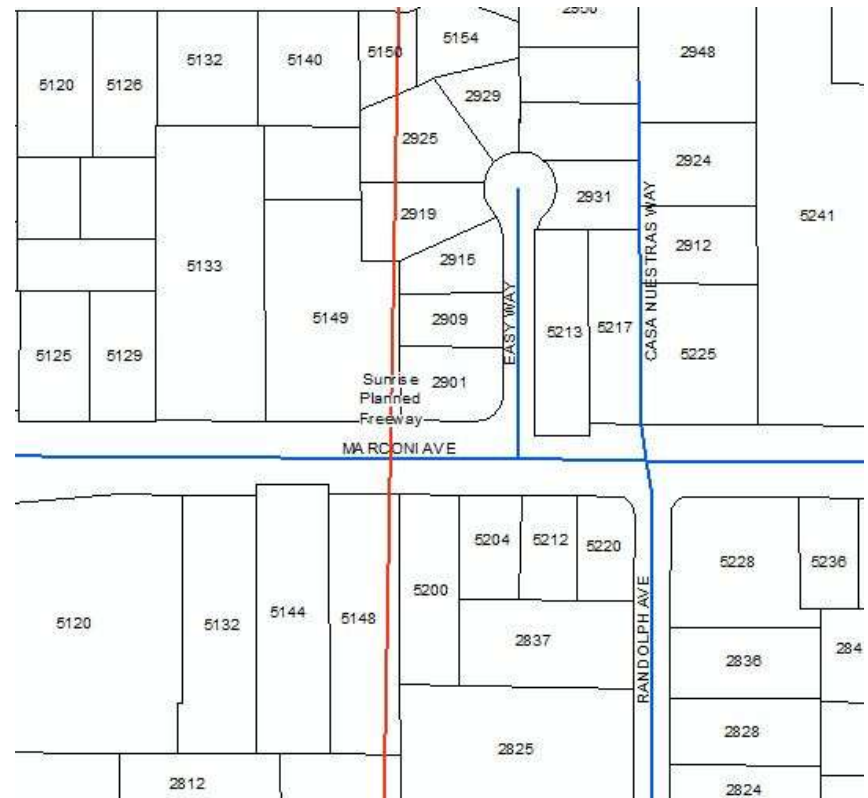


Configure Display Properties

Full Extent

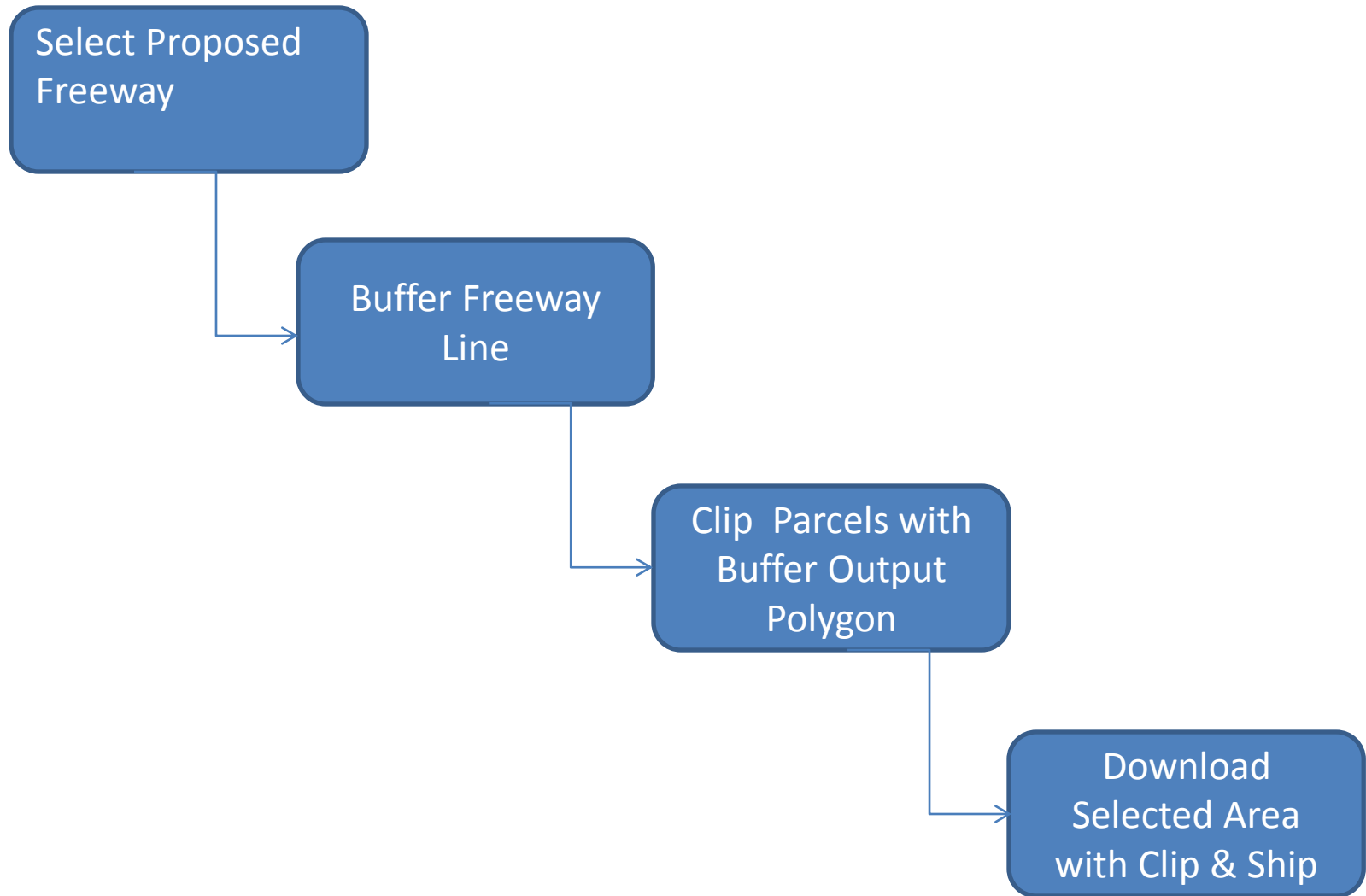


Zoom to Parcel



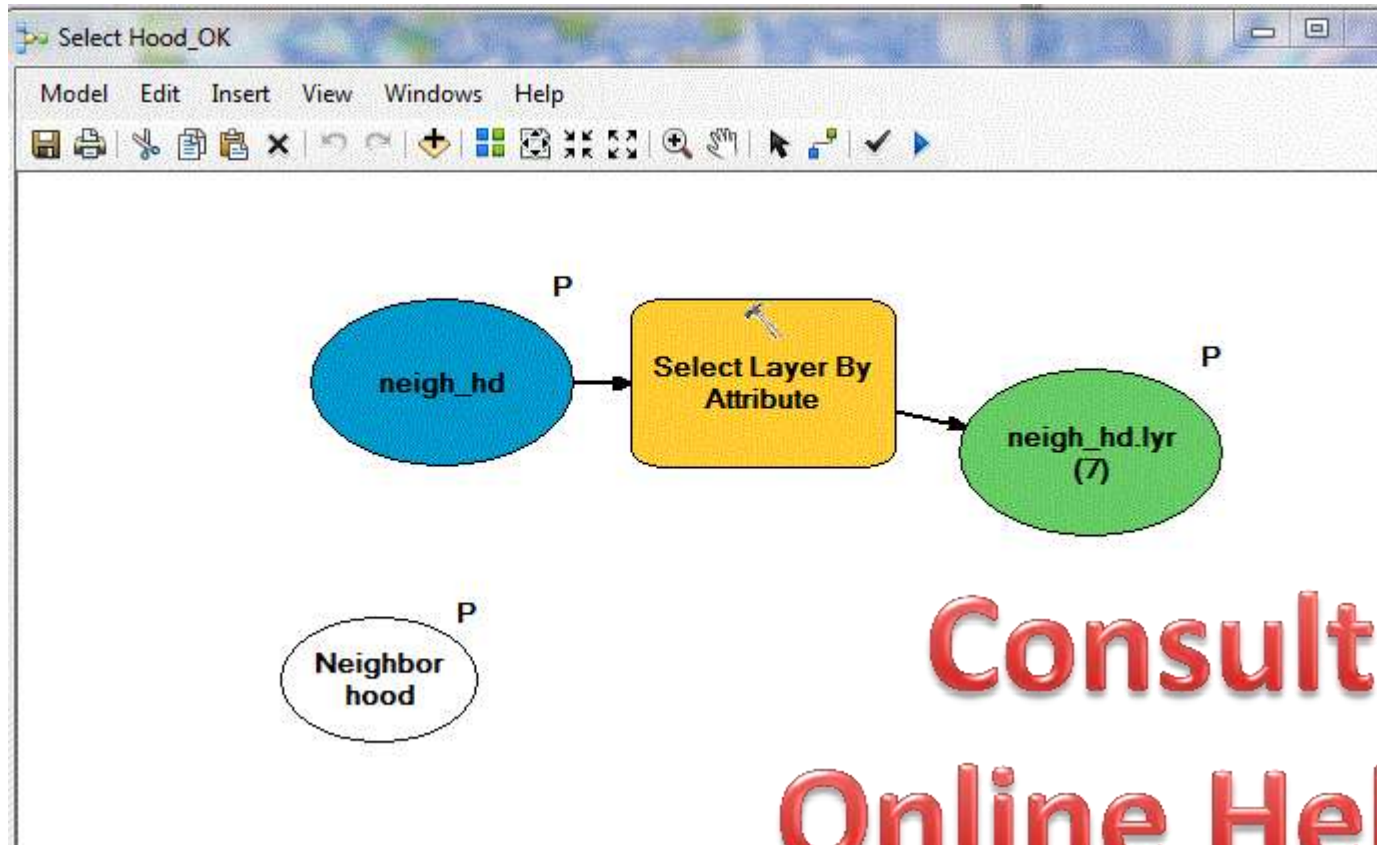
Zooming should be clear, attractive, and orderly

Workflow



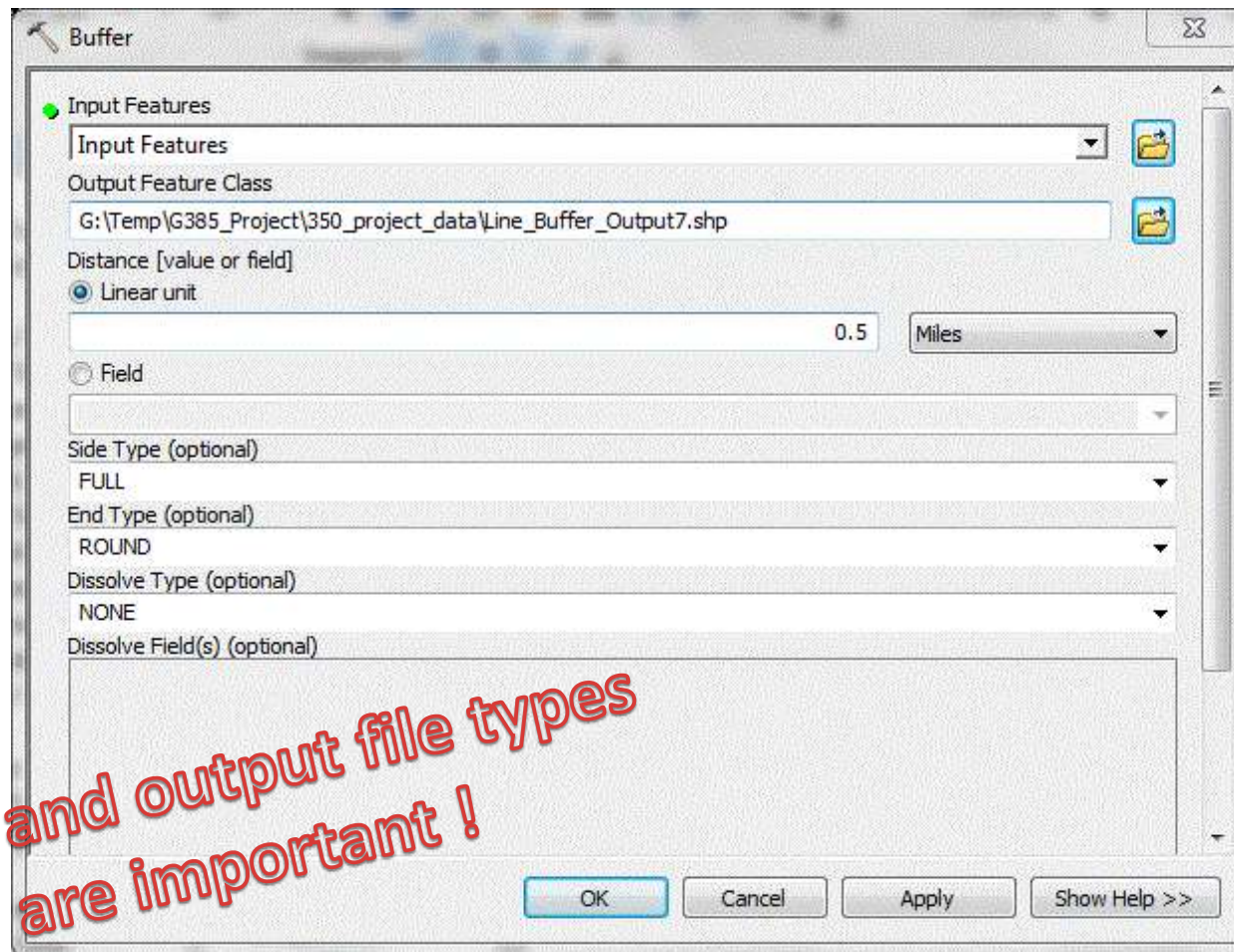
Select by Attributes

Model Builder window in ArcMap



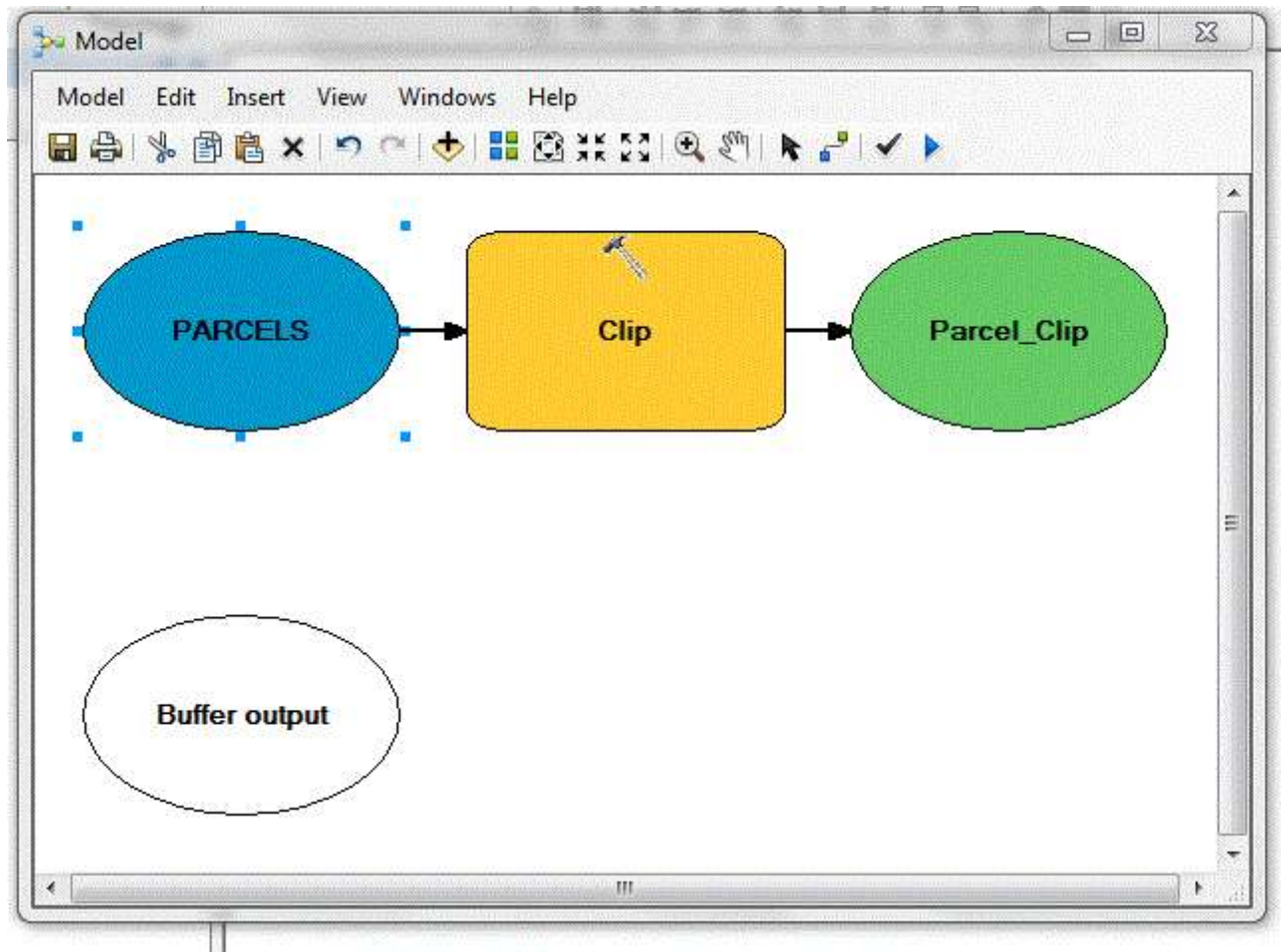
Tool input must be a Feature Layer

Buffer Line Tool



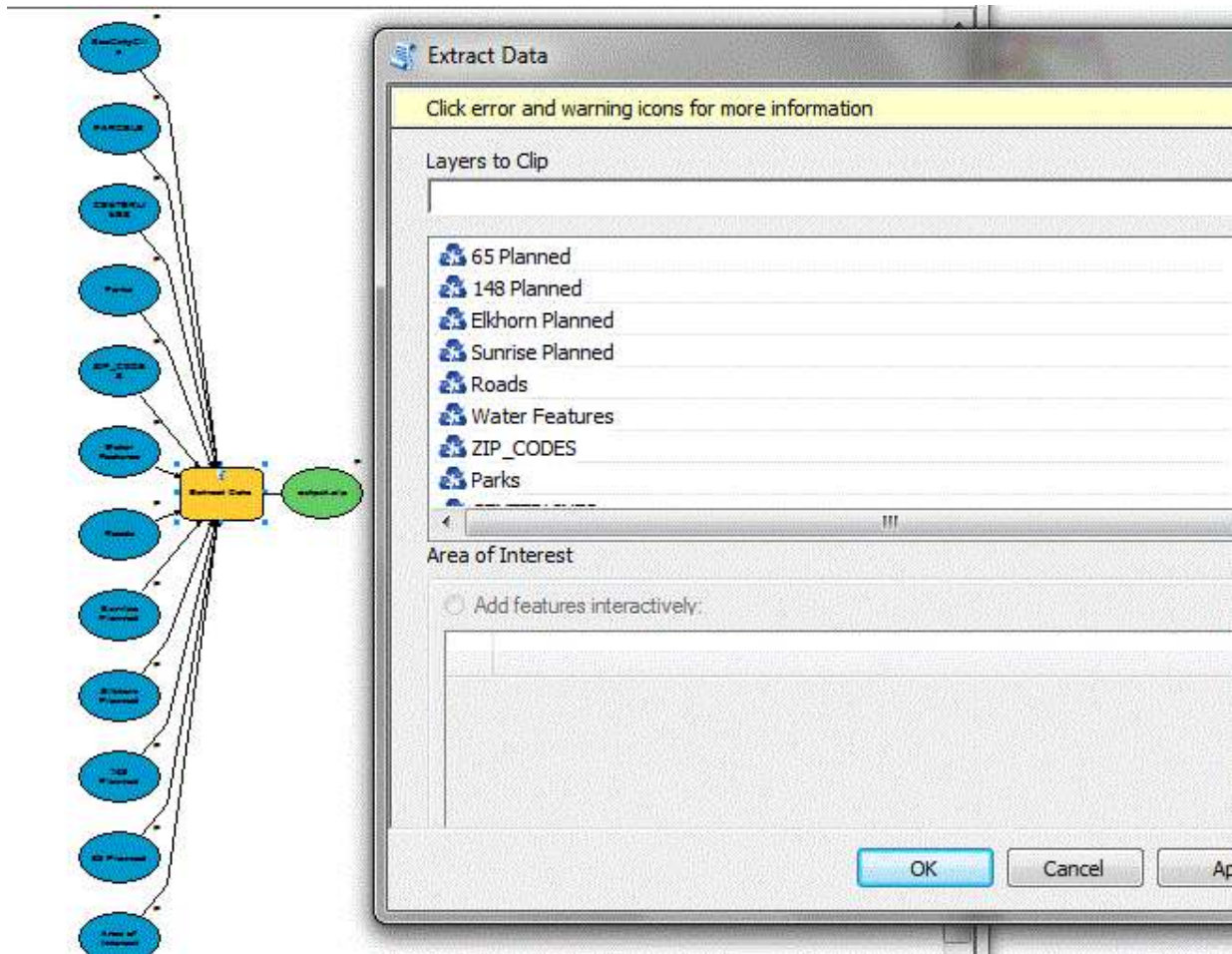
Input a Feature Set to be buffered

Clip



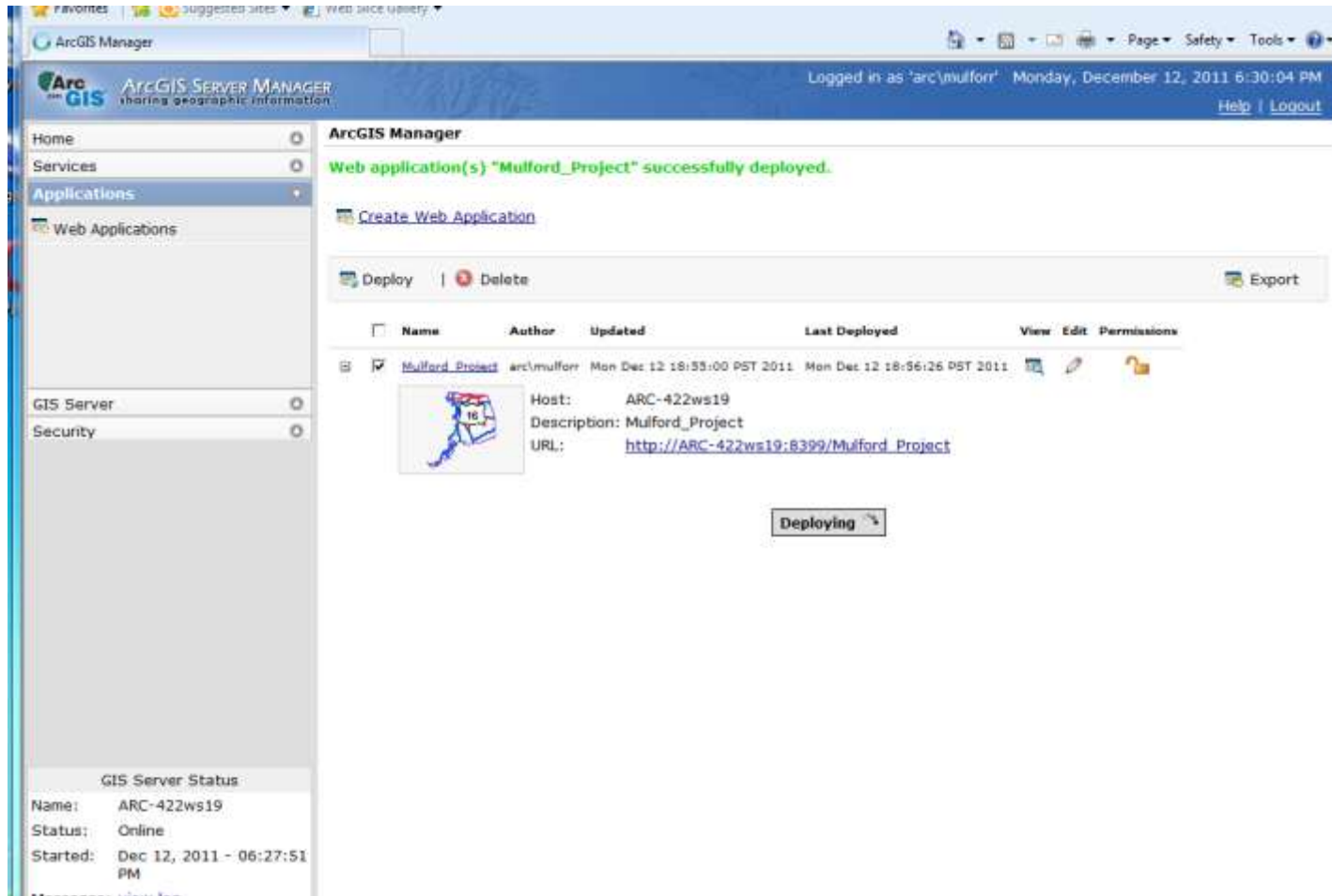
Input a Feature Layer, output will be a Feature Class

Clip & Ship



Simply copy the tool and change the input layers

Deploy the Map Service



ArcServer Manager

Add tool Services as Tasks

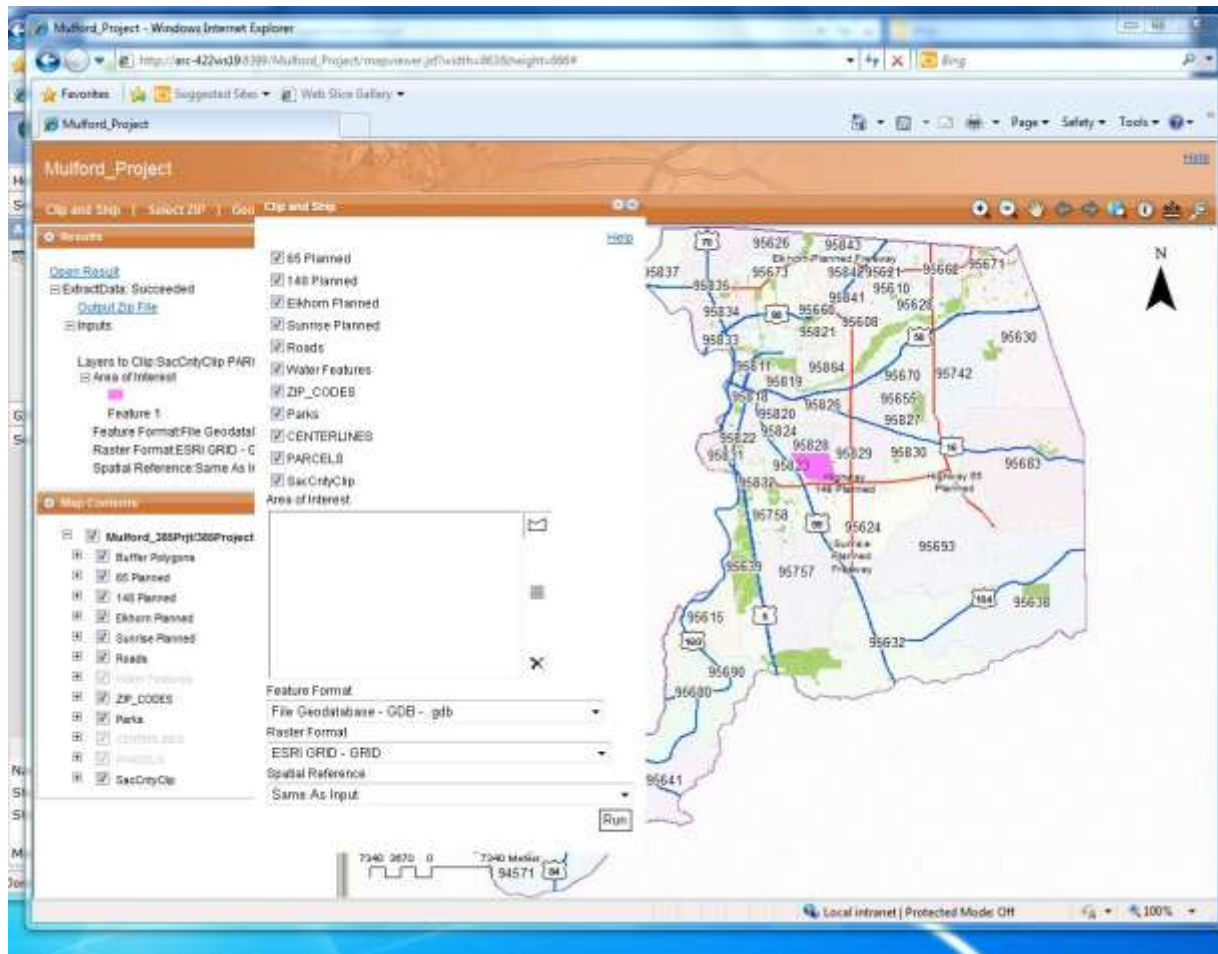
The screenshot shows the ArcGIS Manager web interface in a Windows Internet Explorer browser. The page title is "ArcGIS Manager" and the URL is "http://arc-422ws19:8099/arcgismanager/main/main.jsf". The user is logged in as "arc\mulfor" on Monday, December 12, 2011, at 7:13:49 PM. The main content area is titled "Manage Services" and shows a list of services under the "ARC-422ws19/Mulford_385Prjt" folder. The services are listed in a table with columns: Name, Type, Status, Instances (In Use/Running), Edit, and Security. The services are:

Name	Type	Status	Instances (In Use/Running)	Edit	Security
Mulford_385Prjt/385Project	Map Service	Started	0 / 2		
Mulford_385Prjt/385Project_CLIPSHIP	Map Service	Started	0 / 1		
Mulford_385Prjt/LineBuffer	Map Service	Started	0 / 1		
Mulford_385Prjt/385Project	Geoprocessing Service	Started	0 / 2		
Mulford_385Prjt/385Project_CLIPSHIP	Geoprocessing Service	Started	0 / 1		
Mulford_385Prjt/LineBuffer	Geoprocessing Service	Started	0 / 1		
Mulford_385Prjt/RM_clipS	Geoprocessing Service	Started	0 / 2		
Mulford_385Prjt/RM_Select_ZIP	Geoprocessing Service	Started	0 / 1		
Mulford_385Prjt/RM_Tools	Geoprocessing Service	Started	0 / 1		
Mulford_385Prjt/Select	Geoprocessing Service	Started	0 / 1		

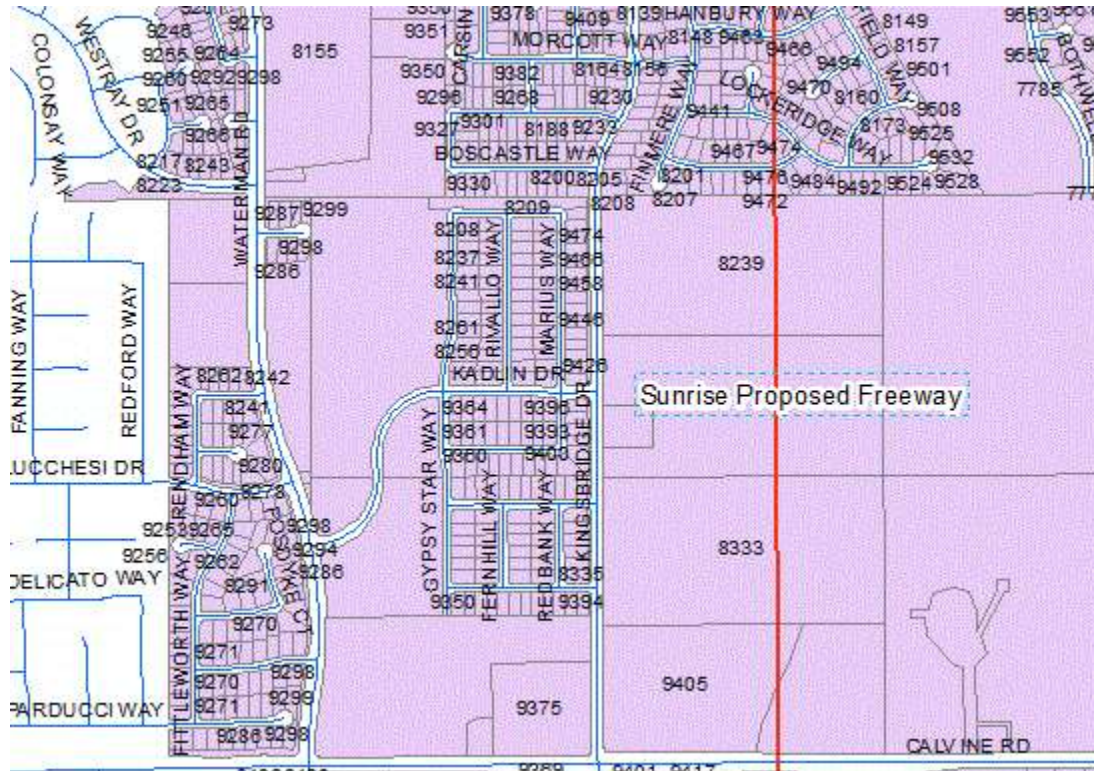
The left sidebar contains navigation links: Home, Services, Manage Services, Publish GIS Resource, Add New Service, Configure Services Handler, KML Network Links, Applications, GIS Server, and Security. The bottom status bar shows "GIS Server Status" with the following information: Name: ARC-422ws19, Status: Online, Started: Dec 12, 2011 - 06:27:51 PM, and Messages: [view log](#). The bottom of the browser window shows a taskbar with a Microsoft Word document titled "Doc1.docx" and a system clock showing 7:17 PM on 12/12/2011.

Test **EACH** tool before deploying the next task

Deploy the Web Application



Users can select areas for download by drawing a rectangle



Clip and Ship tool extracts all layers in to a Zip file