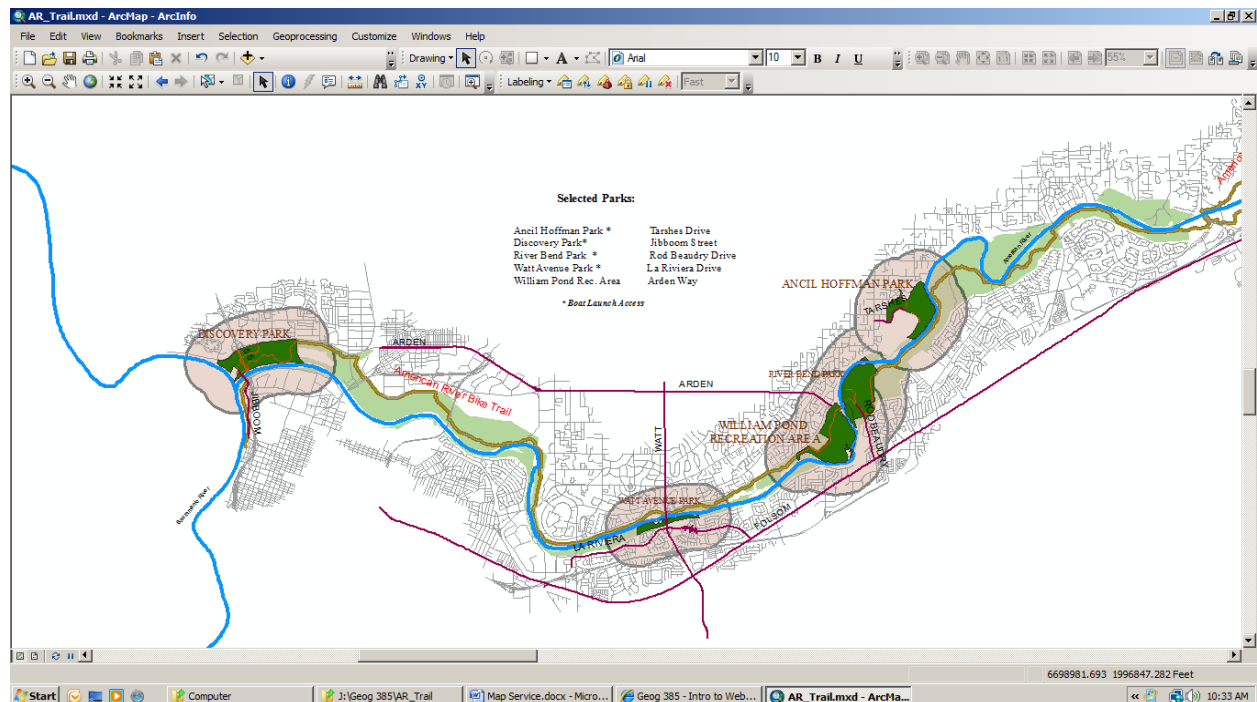


Dawn Magnusson  
Geography 385  
Project Write-up  
December 15, 2011

## The American River Parkway

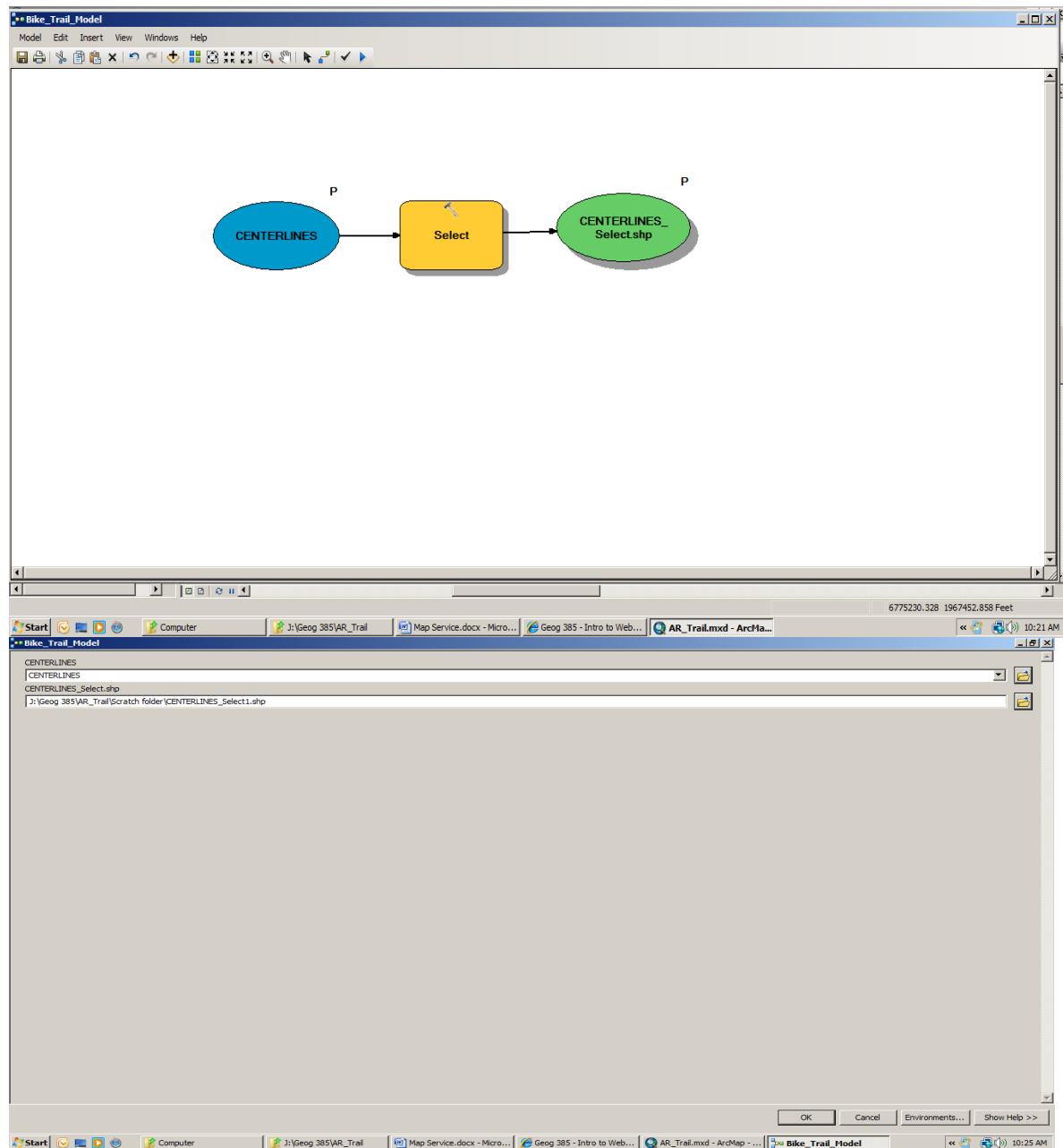
The purpose of this project was to create a site to illustrate some of the amenities of the American River Parkway, including the Bike Trail and boat launching access sites, as well as showing the location of those areas. I decided to use only 5 Selected Parks to save time, and chose parks that I am familiar with.



The ArcMap Document of the American River Parkway, highlighting 5 Selected Parks and the American River Bike Trail.

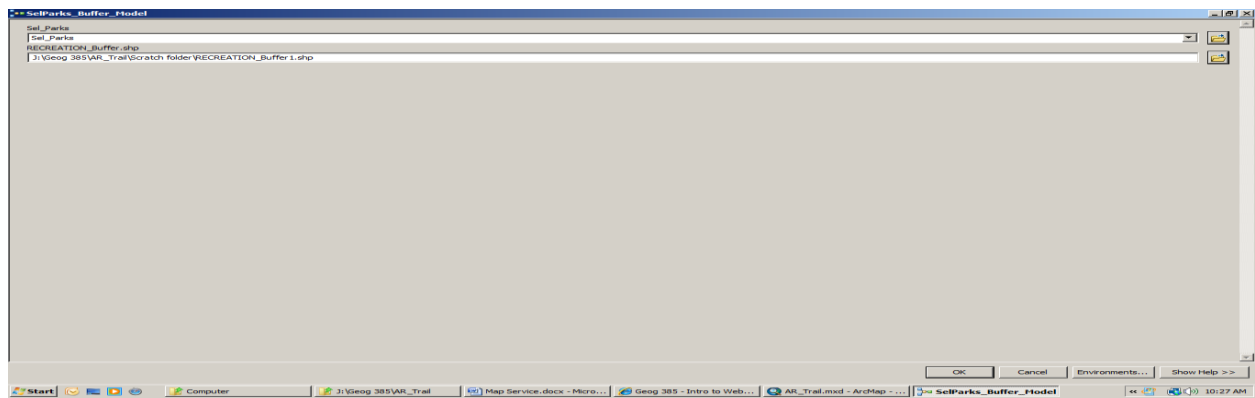
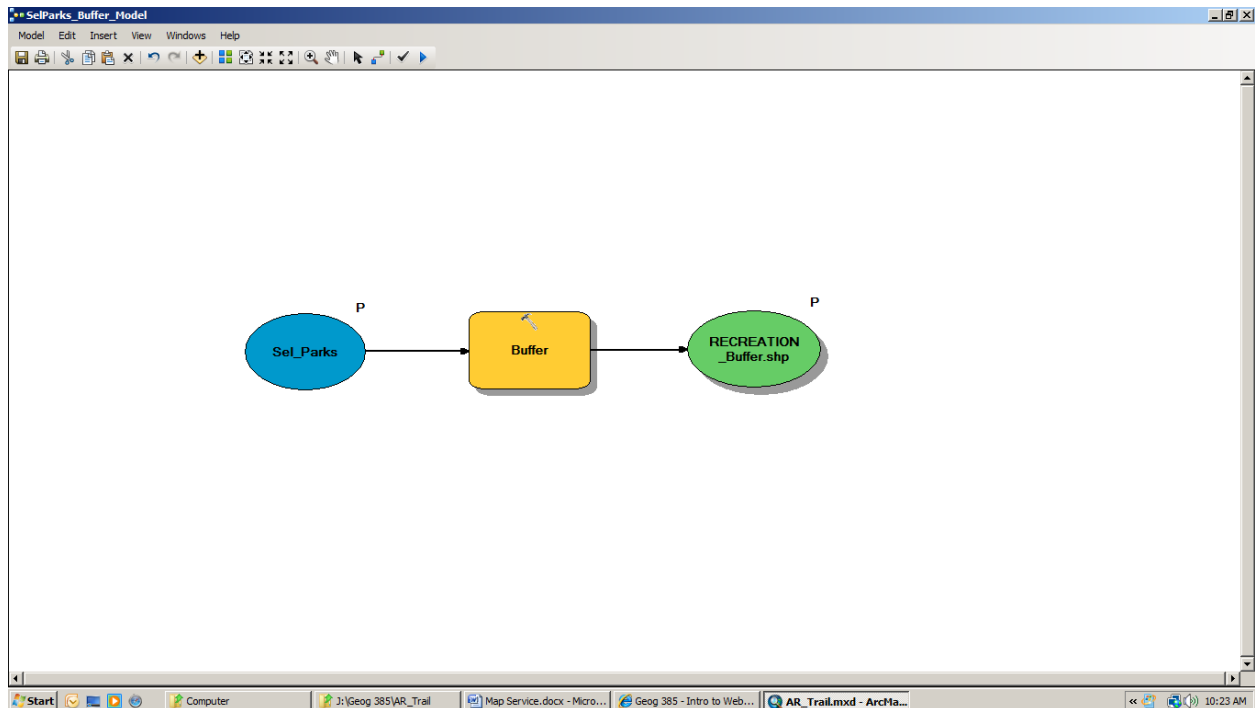
I used data from both the City and County of Sacramento. Some areas of the parks, streets and rivers I wanted to use were not included in City data. I had hoped that the American River Parkway Foundation would have their own data, but I found none. I used Select by Attribute to select the parks, the American and Sacramento Rivers, and the Parkway itself. Then I used Select by Location to show the streets within a mile of the Parkway. I used Select by Attribute to select and highlight the streets where the parks were located.

## Bike Trail Model and Tool, with Parameters



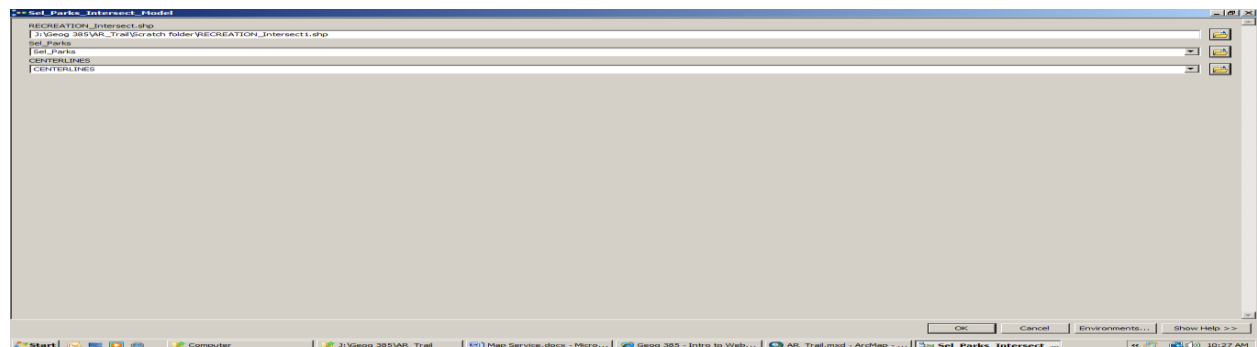
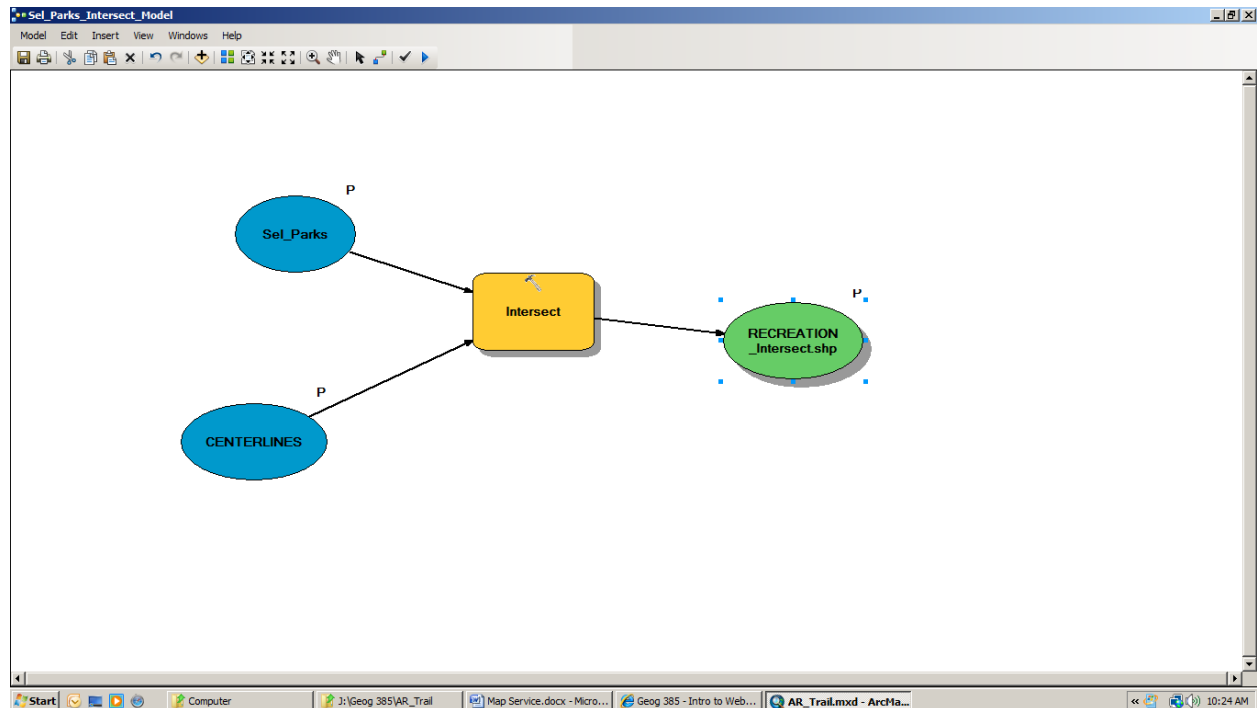
I wanted to highlight the Bike Trail as one of the important amenities of the Parkway. This model uses Select from the ArcMap toolbox.

## Parks Buffer

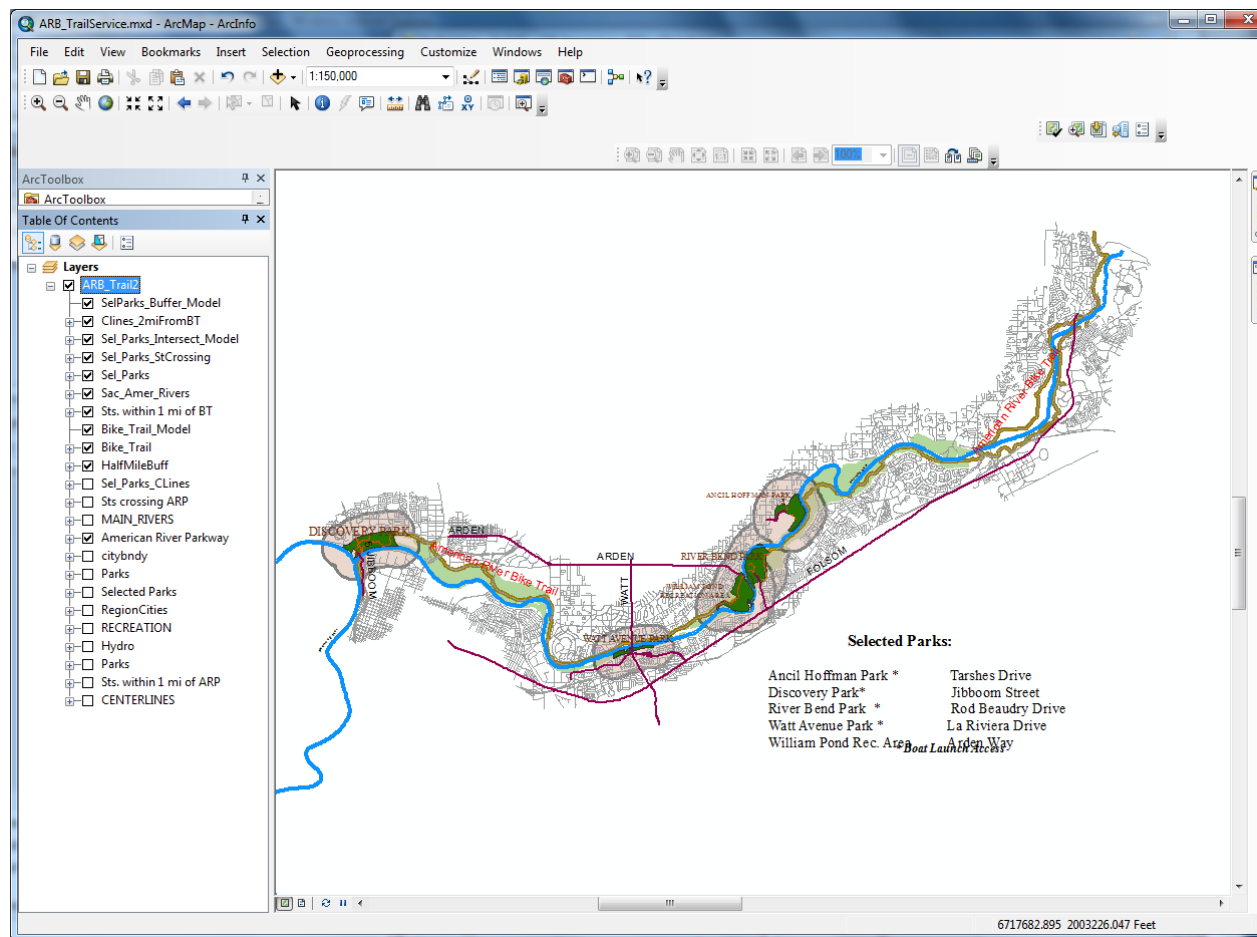


This model puts a 1000 foot buffer around the Selected Parks, to highlight the area around the parks.

Centerline Intersects, showing streets crossing Selected Parks



This model shows streets crossing the parks, to highlight the location and access to the parks.



Map Service Document Resulting from the ArcMap Document, with the following Geoprocessing routines: Bike Trail Model, (showing the Bike Trail in Brown), Parks Buffer, (showing a 1000 foot buffer around Selected Parks), and an Intersect routine, showing the streets crossing and/or leading to the Parks.

Once completed the ArcMap document, I brought it to class to attempt to create a Map Service and than a Web Application. I created the Map Service through ArcCatalog, but when I tried to use ArcGis Server Manager, I kept getting error messages, saying the service was not available, or could not be accessed by the Server. I got as far as downloading a layer, but was unable to get to the Task screen. I'm not sure if this difficulty could have been avoided if I had used the same machine/server to create the ArcMap document and use the Server Manager. Since I was unable to "test" the service as I was creating the map (at home), perhaps I didn't understand some of the requirements of getting the Map Service published as a Web Application.